

 ATMIYA UNIVERSITY	NAAC – Cycle – 1 AISHE: U-0967	
	Criterion 4	I & LR
	KI 4.1	M 4.1.1

Skill Centres and Sustainable Development Initiatives facilities

Sr. No.	Geotagged Photographs	Page No.
1	Centre of Excellence in Embedded Systems & Robotics	2
2	BIRAC - EYUVA Centre	3
3	Centre of Excellence Automobile engineering	4
4	Electro Plating Lab	7
5	Language Lab	8
6	Advanced manufacturing facility housing 3D printers, CNC/ VMC machines and laser cutters	9
7	Rooftop Solar Power Plant	10
8	Waste management and disposal facility	11
9	EVAC (Electric Vehicle Alternating Current) Charging station	12
10	Wealth from Waste Products - <i>Sarjan</i>	13
11	Paper Recycling Unit - <i>Parivartan</i>	15
12	Advanced Farming Techniques - <i>Niramay</i>	17
13	Formulation of Household Chemicals- <i>Samarth</i>	18
14	Medicinal Plant Garden	19
15	Gaushala - <i>Satyakam</i>	20
16	Plastic Recycling Unit	21



Registrar
Atmiya University
Rajkot

Atmiya University, Rajkot-Gujarat-India





**ATMIYA
UNIVERSITY**

NAAC – Cycle – 1

AISHE: U-0967

Criterion 4

I & LR

KI 4.1

M 4.1.1

Centre of Excellence in Embedded Systems & Robotics



 ATMIYA UNIVERSITY	NAAC – Cycle – 1 AISHE: U-0967	
	Criterion 4	I & LR
	KI 4.1	M 4.1.1

BIRAC - EYUVA Centre





**ATMIYA
UNIVERSITY**

NAAC – Cycle – 1

AISHE: U-0967

Criterion 4

I & LR

KI 4.1

M 4.1.1

Centre of Excellence Automobile engineering





**ATMIYA
UNIVERSITY**

NAAC – Cycle – 1

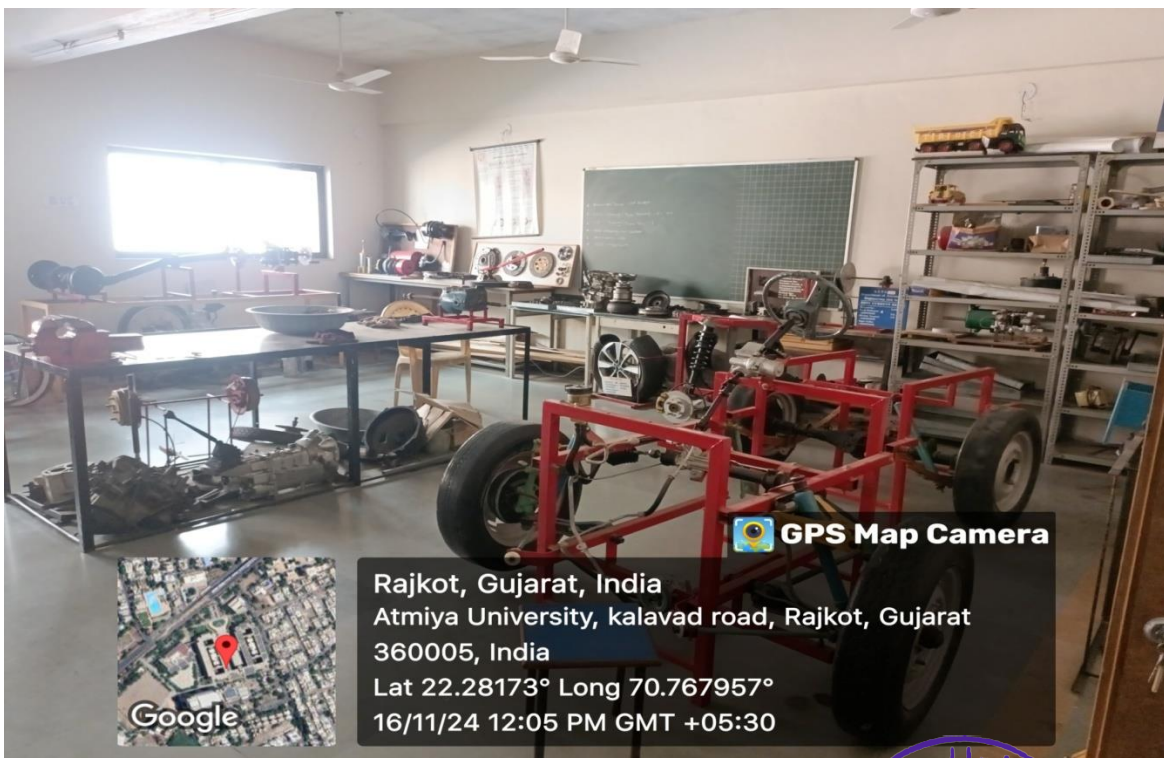
AISHE: U-0967

Criterion 4

I & LR

KI 4.1

M 4.1.1





**ATMIYA
UNIVERSITY**

NAAC – Cycle – 1

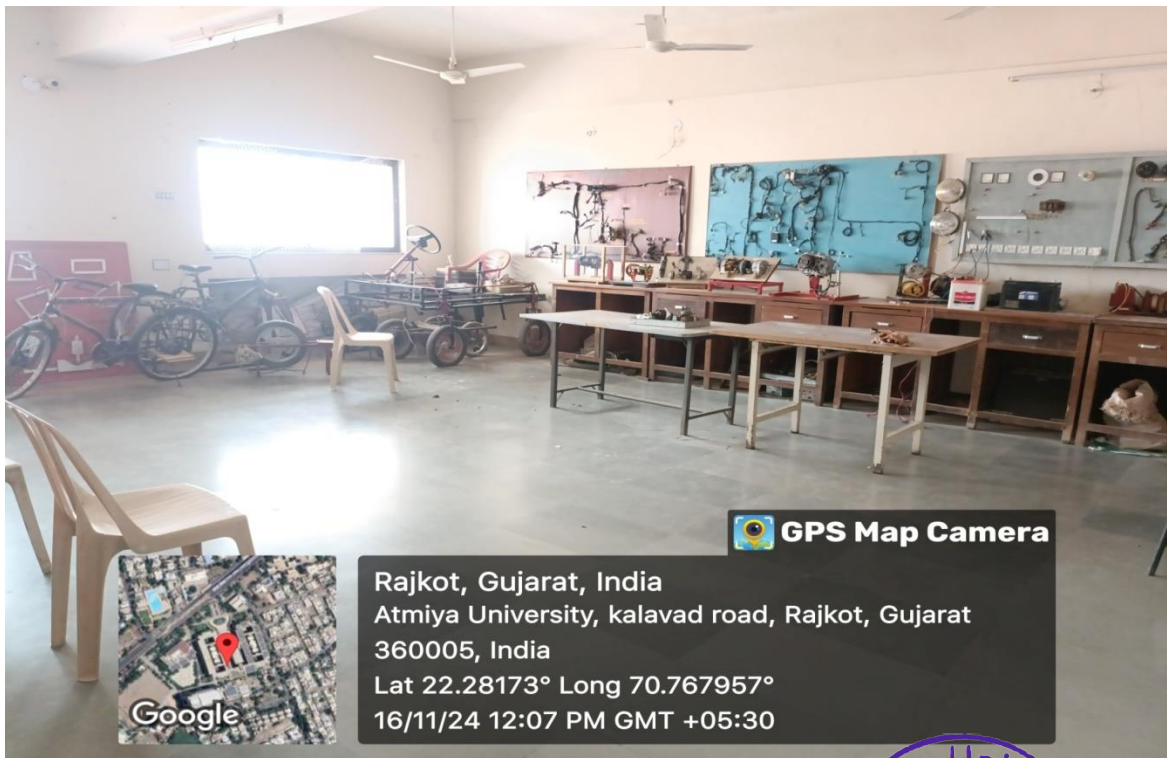
AISHE: U-0967

Criterion 4

I & LR

KI 4.1

M 4.1.1





**ATMIYA
UNIVERSITY**

NAAC – Cycle – 1

AISHE: U-0967

Criterion 4

I & LR

KI 4.1

M 4.1.1

Electro Plating Lab



 ATMIYA UNIVERSITY	NAAC – Cycle – 1 AISHE: U-0967	
	Criterion 4	I & LR
	KI 4.1	M 4.1.1

Language Lab





**ATMIYA
UNIVERSITY**

NAAC – Cycle – 1

AISHE: U-0967

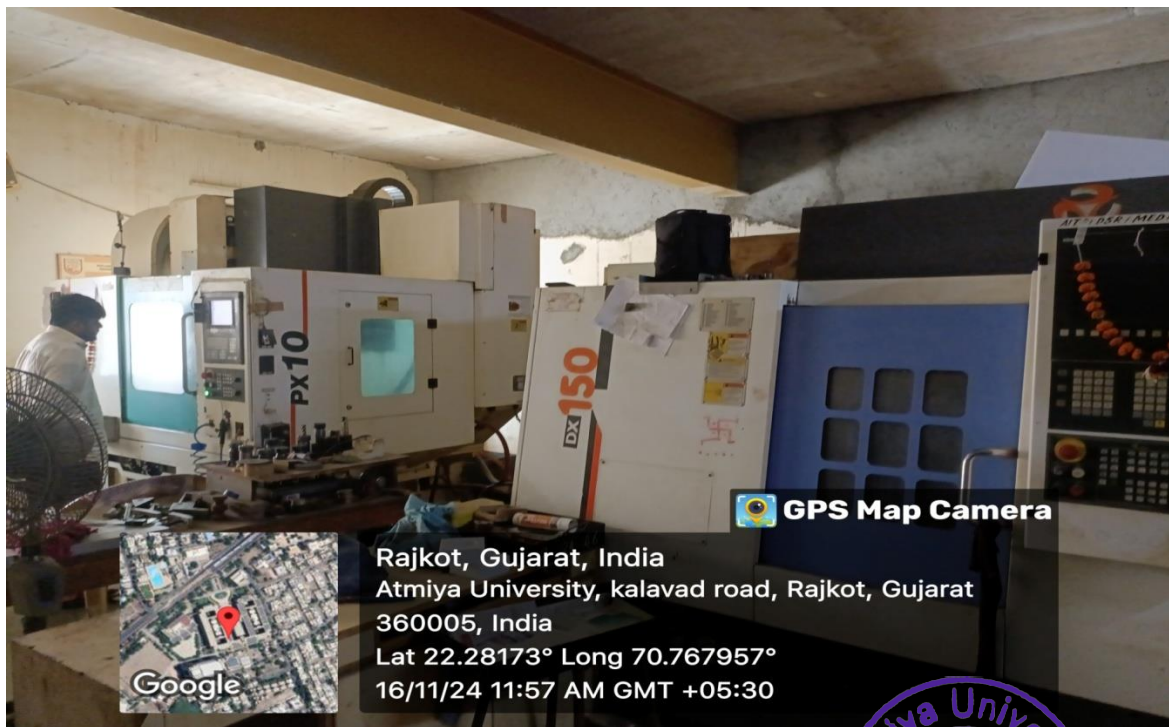
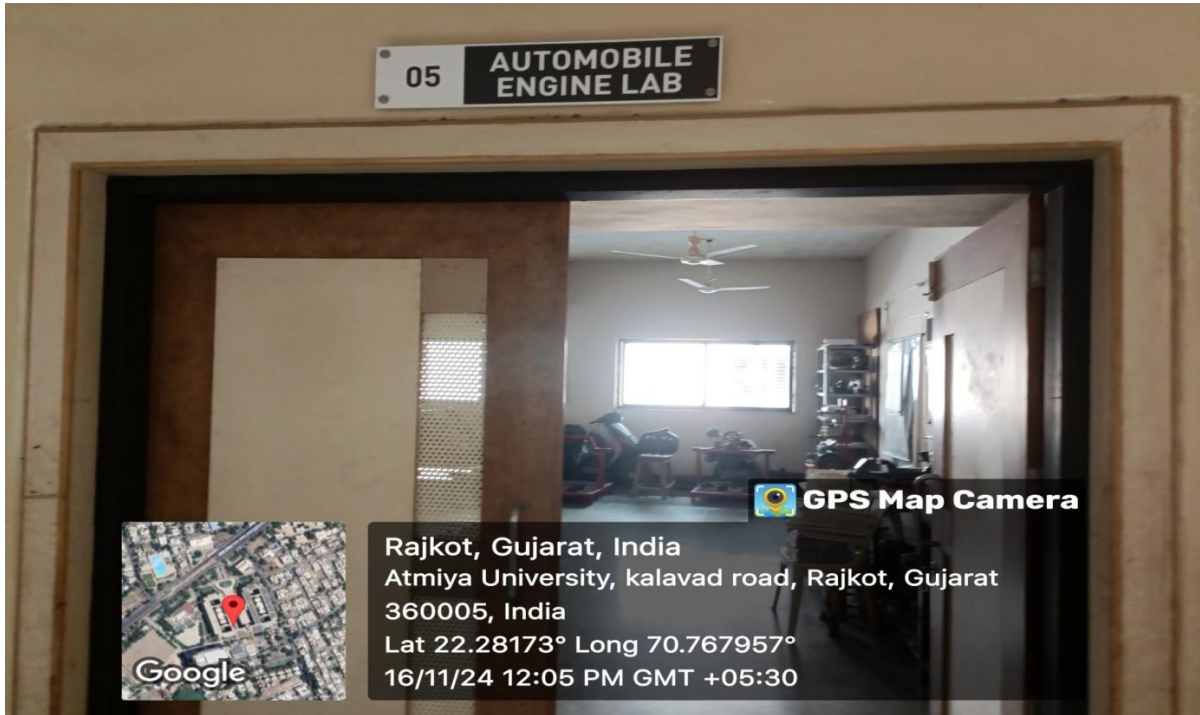
Criterion 4

I & LR

KI 4.1

M 4.1.1

Advanced manufacturing facility housing 3D printers, CNC/ VMC machines and laser cutters





Rooftop Solar Power Plant





Waste management and disposal facility





**ATMIYA
UNIVERSITY**

NAAC – Cycle – 1

AISHE: U-0967

Criterion 4

I & LR

KI 4.1

M 4.1.1

EVAC (Electric Vehicle Alternating Current) Charging station



 ATMIYA UNIVERSITY	NAAC – Cycle – 1 AISHE: U-0967	
	Criterion 4	I & LR
	KI 4.1	M 4.1.1

Wealth from Waste Products - Sarjan



100 Kg corn per month
 60 Kg waste material (Husk)
 40 Kg used to make food







**ATMIYA
UNIVERSITY**

NAAC – Cycle – 1

AISHE: U-0967

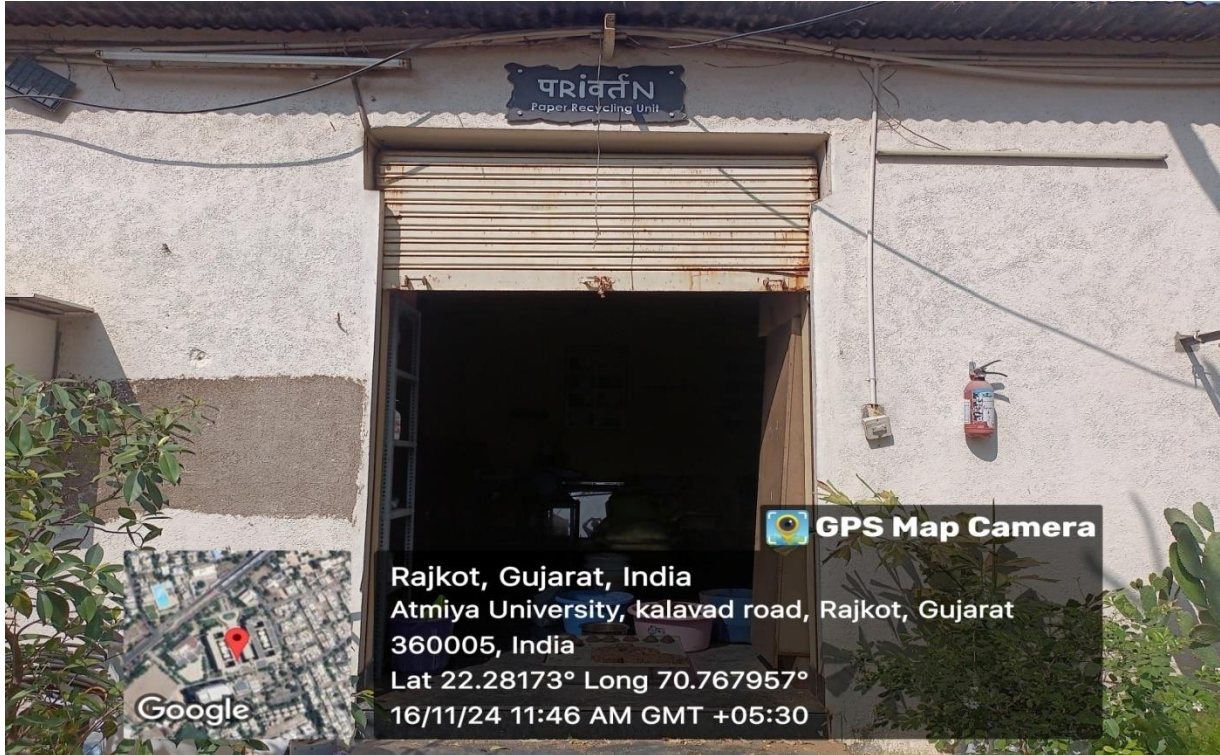
Criterion 4

I & LR

KI 4.1

M 4.1.1

Paper Recycling Unit - Parivartan





**ATMIYA
UNIVERSITY**

NAAC – Cycle – 1

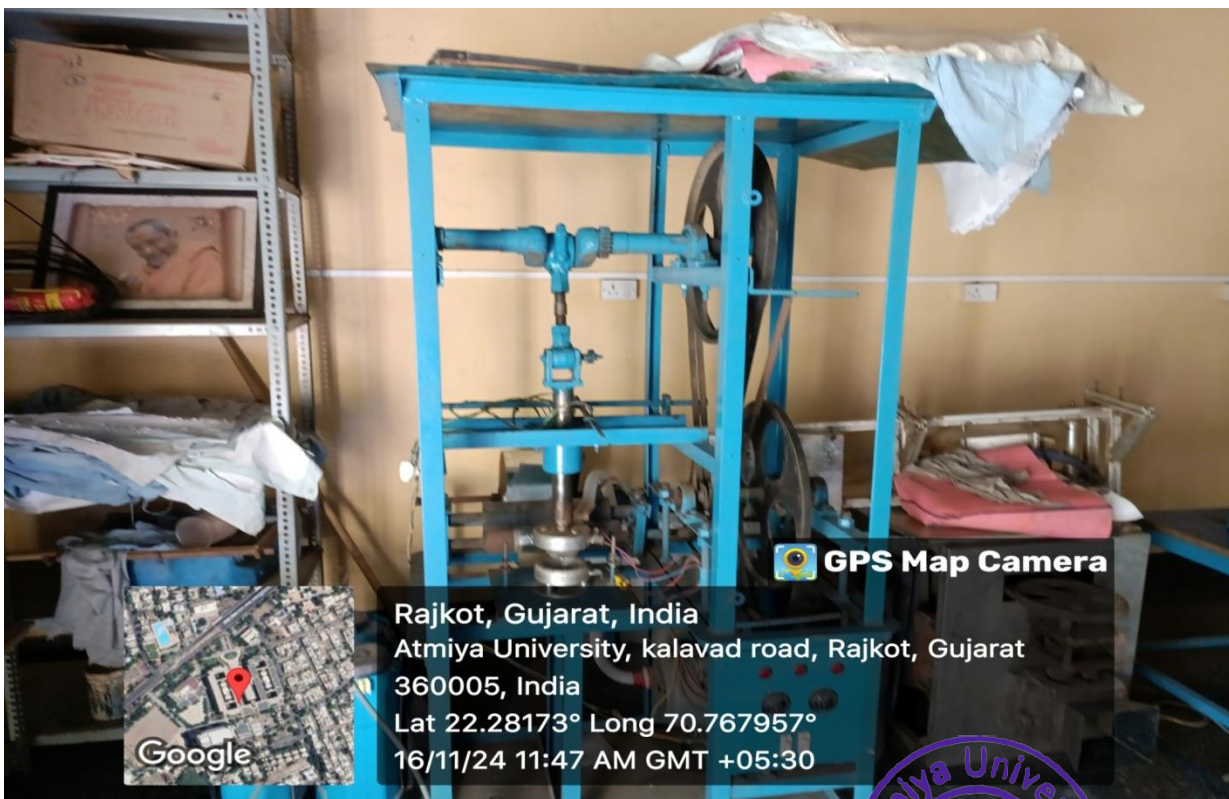
AISHE: U-0967

Criterion 4

I & LR

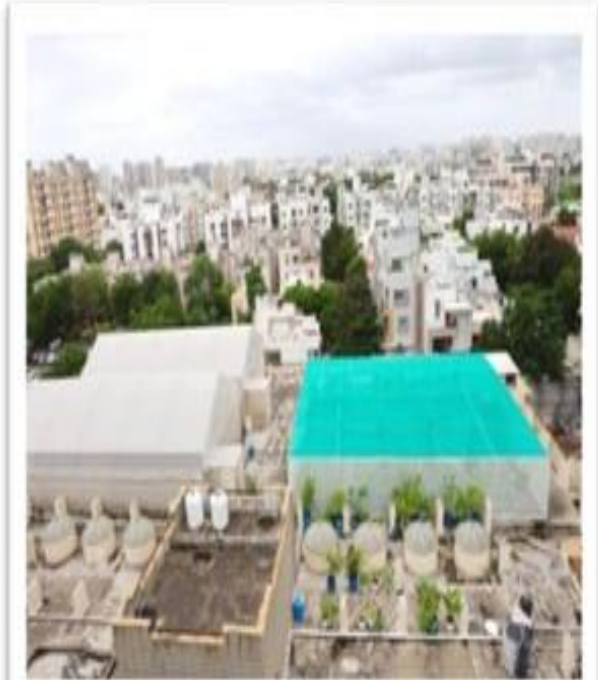
KI 4.1

M 4.1.1





Advanced Farming Techniques - *Niramay*





Formulation of Household Chemicals- *Samarth*





**ATMIYA
UNIVERSITY**

NAAC – Cycle – 1

AISHE: U-0967

Criterion 4

I & LR

KI 4.1

M 4.1.1

Medicinal Plant Garden





**ATMIYA
UNIVERSITY**

NAAC – Cycle – 1

AISHE: U-0967

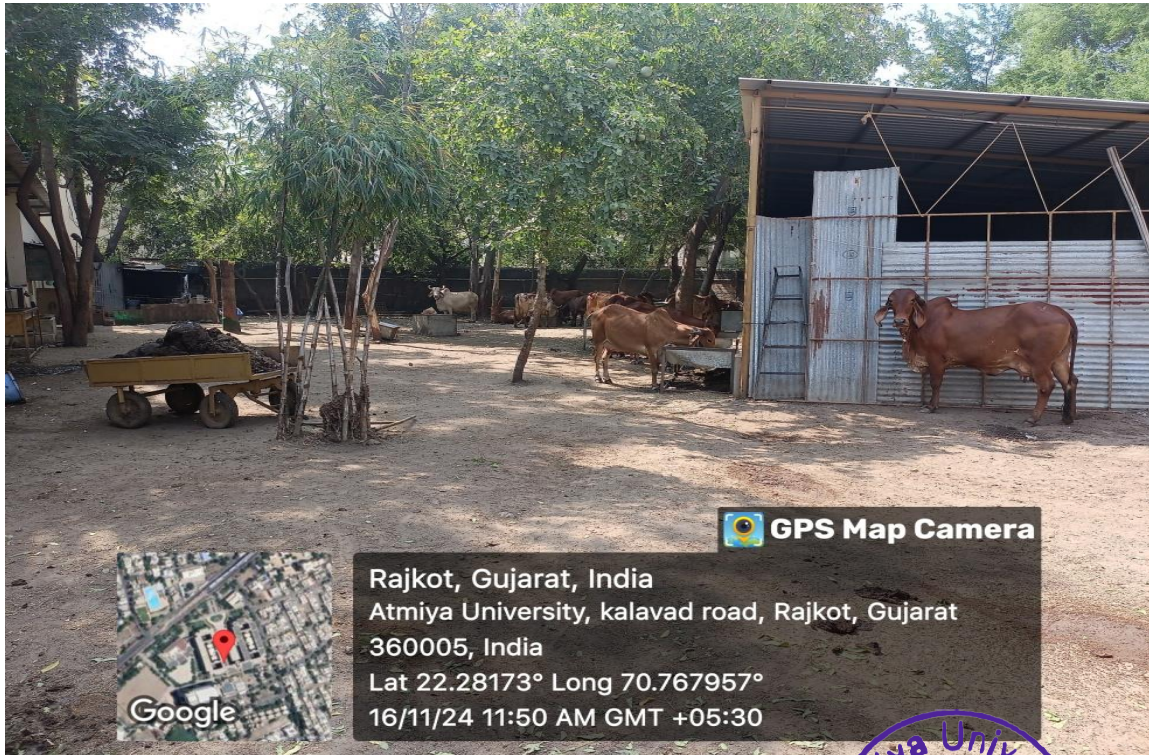
Criterion 4

I & LR

KI 4.1

M 4.1.1

Gaushala - Satyakam





**ATMIYA
UNIVERSITY**

NAAC – Cycle – 1

AISHE: U-0967

Criterion 4

I & LR

KI 4.1

M 4.1.1

Plastic Recycling Unit



**Registrar
Atmiya University
Rajkot**

Atmiya University, Rajkot-Gujarat-India

