

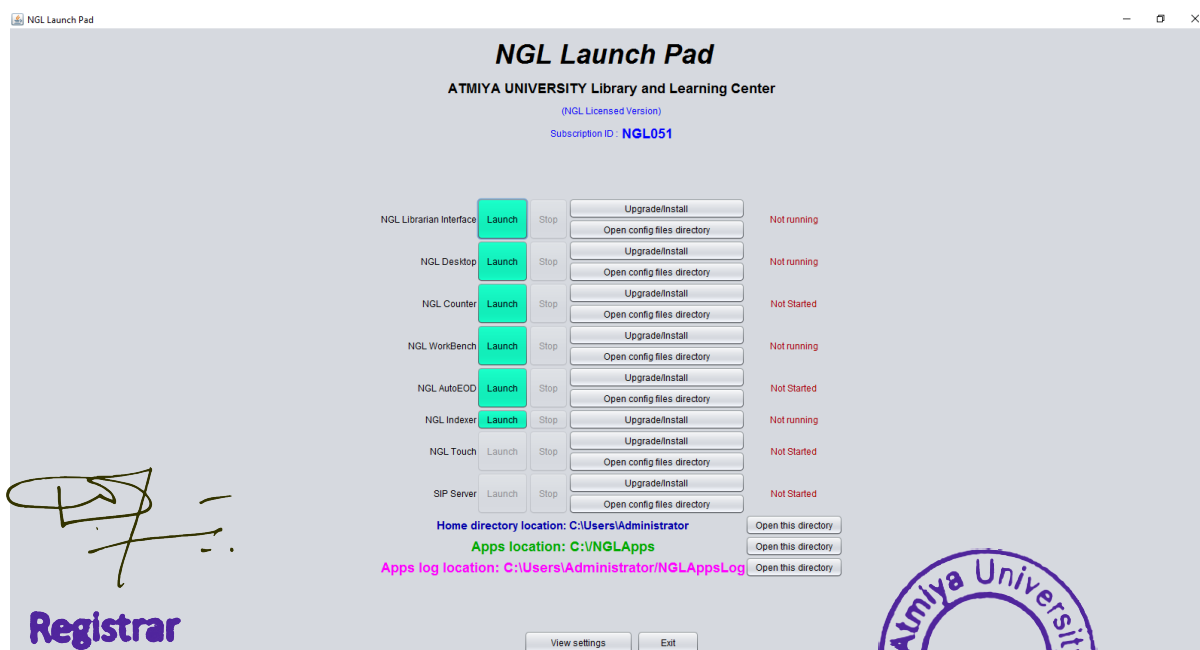
 ATMIYA UNIVERSITY	NAAC – Cycle – 1	
	AISHE: U-0967	
	Criterion 4	I&LR
	KI 4.2	M 4.2.1

Modules of the ILMS – NewGenLib 3.3

The detailed technical features of the ILMS are as follows:

Functional modules are completely web-based. Uses **Java Web Start™** Technology

- Compatibility - Complies with international metadata and interoperability standards: **MARC-21, MARC-XML, z39.50, SRU/W, OAI-PMH**
- Uses chiefly **open source** components
- Scalable, manageable and efficient
- **OS independent** - Windows and Linux flavors available
- **z39.50 Client** for **federated** searching
- Internationalized application (I18N)
- **Unicode 4.0** complaint
- Easily extensible to **support other languages**
- Data entry, storage, retrieval in any (**Unicode 4.0**) language
- **RFID integration**
- **Networking** – Hierarchical and Distributed networks
- **Automated email/instant messaging** integrated into different functions of the software
- Form letters are configurable and use **XML-based Open Office templates**
- Extensive use of **set up parameters** enabling easy configuration of the software to suit specific needs, e.g., in defining patron privileges
- **Supports multi-user** and multiple security levels
- Allows digital attachments to metadata



Registrar

Atmiya University

Rajkot

Atmiya University, Rajkot-Gujarat-India



 ATMIYA UNIVERSITY	NAAC – Cycle – 1	
	AISHE: U-0967	
	Criterion 4	I&LR
	KI 4.2	M 4.2.1

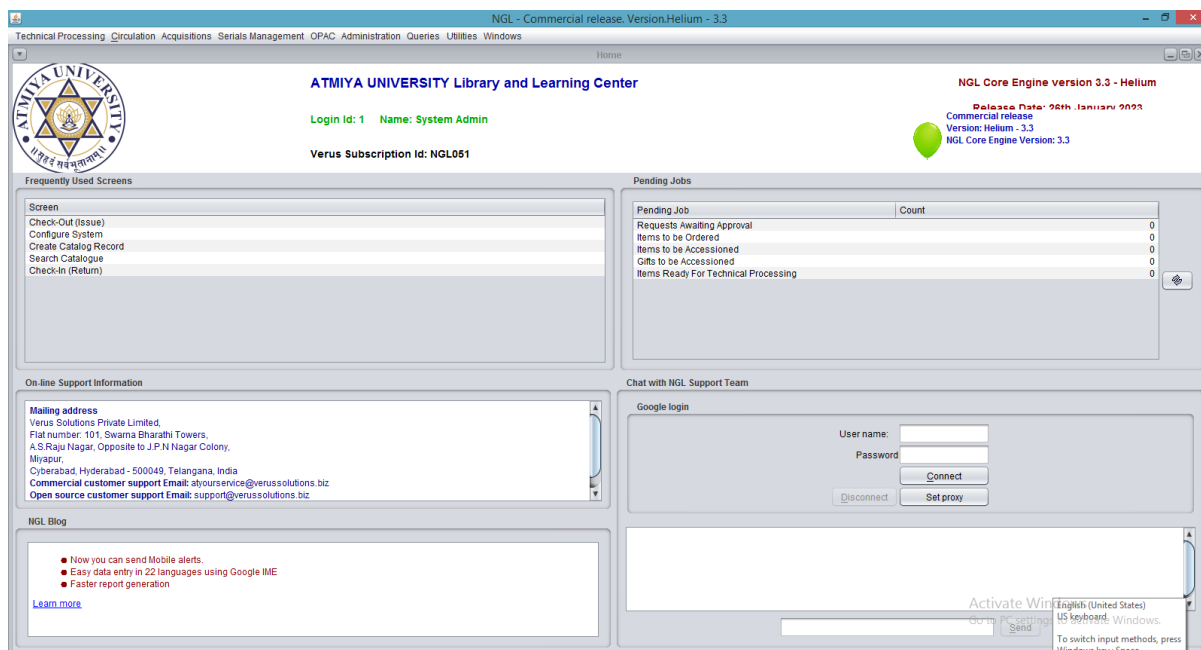


Fig 1: The Home page of the ILMS

Technical Processing (Cataloguing)

Import Bibliographic data

- From other libraries' OPACs
- Primary or Original Cataloguing
 - Provides 3 different templates for Cataloguing: Simple, General and MARC21 Templates
 - Compliant to MARC21 for Bibliographic, Authority and Holdings Data
 - Supports all material types (By MARC21)
 - Open Archive support (OAI-PMH protocol compliant)
 - Attach digital content along with catalogue record
 - Customizable MARC21 templates and Search indexes

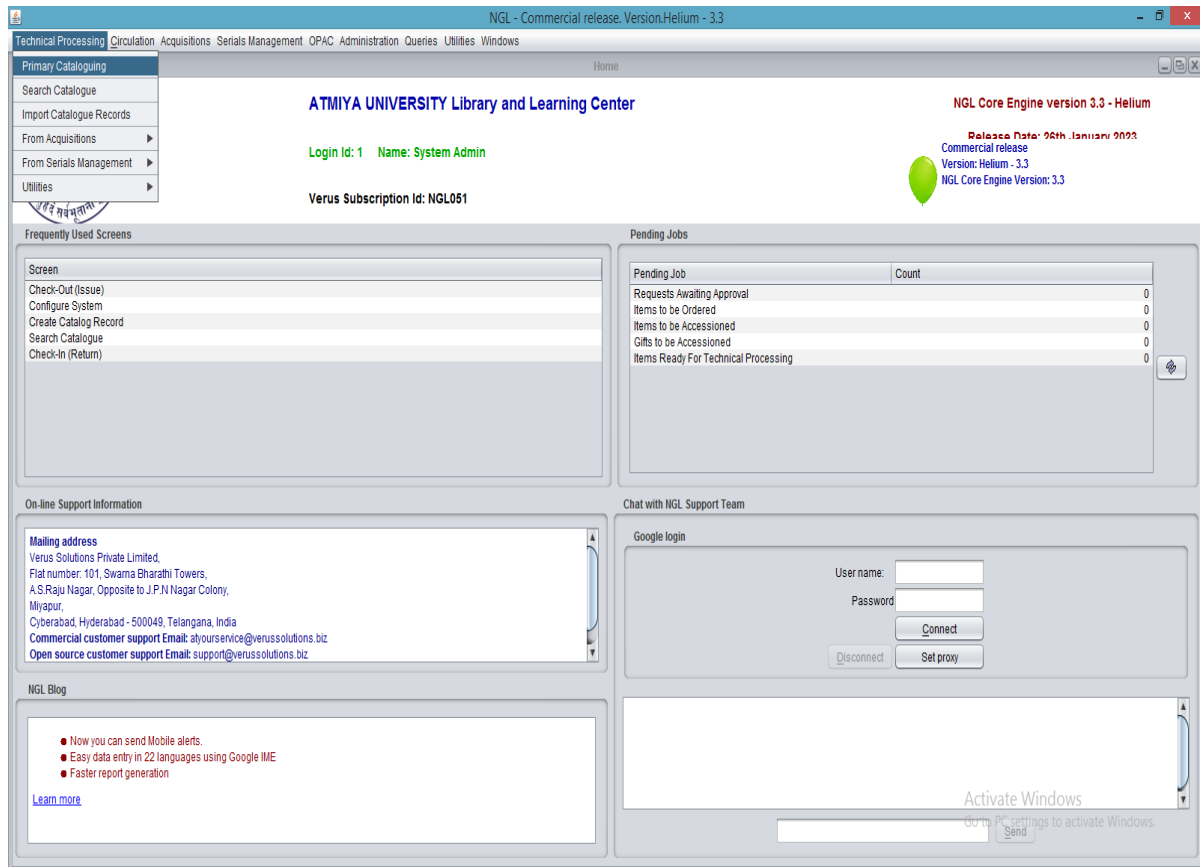


Registrar
Atmiya University
Rajkot

Atmiya University, Rajkot-Gujarat-India



 ATMIYA UNIVERSITY	NAAC – Cycle – 1	
	AISHE: U-0967	
	Criterion 4	I&LR
	KI 4.2	M 4.2.1



Technical Processing | Circulation | Acquisitions | Serials Management | OPAC | Administration | Queries | Utilities | Windows

Home

ATMIYA UNIVERSITY Library and Learning Center

Login Id: 1 Name: System Admin

Verus Subscription Id: NGL051

NGL Core Engine version 3.3 - Helium

Release Date: 26th January 2023

Commercial release

Version: Helium - 3.3

NGL Core Engine Version: 3.3

Frequently Used Screens

Screen
Check-Out (Issue)
Configure System
Create Catalog Record
Search Catalogue
Check-In (Return)

Pending Jobs

Pending Job	Count
Requests Awaiting Approval	0
Items to be Ordered	0
Items to be Accessioned	0
Gifts to be Accessioned	0
Items Ready For Technical Processing	0

On-line Support Information

Mailing address

Verus Solutions Private Limited,
Flat number: 101, Swarna Bharathi Towers,
A.S.Raju Nagar, Opposite to J.P.N Nagar Colony,
Miyapur,
Cyberabad, Hyderabad - 500049, Telangana, India
Commercial customer support Email: stourservice@verusolutions.biz
Open source customer support Email: support@verusolutions.biz

NGL Blog

- Now you can send Mobile alerts.
- Easy data entry in 22 languages using Google IME
- Faster report generation

[Learn more](#)

Chat with NGL Support Team

Google login

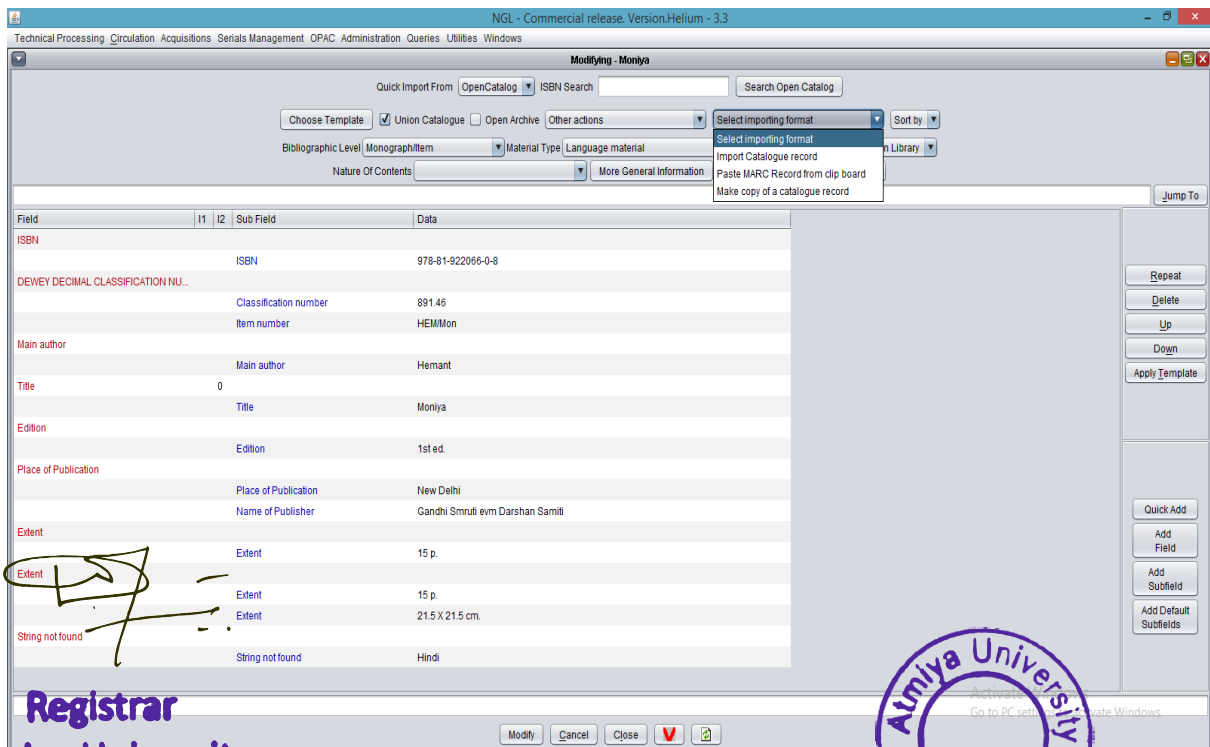
User name:

Password:

Activate Windows

Go to PC settings to activate Windows.

Fig 2: ILMS Technical Processing Menu



Technical Processing | Circulation | Acquisitions | Serials Management | OPAC | Administration | Queries | Utilities | Windows

Modifying - Moniya

Quick Import From: ISBN Search: Search Open Catalog

Choose Template: ☒ Union Catalogue ☐ Open Archive Other actions:

Bibliographic Level: Monograph/Item Material Type: Language material

Nature Of Contents: More General Information:

Import Catalogue record

Paste MARC Record from clip board

Make copy of a catalogue record

Jump To

Field	I1	I2	Sub Field	Data
ISBN			ISBN	978-81-922066-0-9
DEWEY DECIMAL CLASSIFICATION NU...			Classification number	891.46
			Item number	HEMMon
Main author			Main author	Hemant
Title	0		Title	Moniya
Edition			Edition	1st ed.
Place of Publication			Place of Publication	New Delhi
			Name of Publisher	Gandhi Smriti evm Darshan Samiti
Extent			Extent	15 p.
Extent			Extent	15 p.
String not found			String not found	21.5 X 21.5 cm.
			String not found	Hindi

Repeat

Delete

Up

Down

Apply Template

Quick Add

Add Field

Add Subfield

Add Default Subfields

Modify Cancel Close

Fig 3: ILMS Cataloguing Module

 ATMIYA UNIVERSITY	NAAC – Cycle – 1	
	AISHE: U-0967	
	Criterion 4	I&LR
	KI 4.2	M 4.2.1

- Search catalogue
 - Search catalogue through various system defined Indexes
 - Library can also define custom indexes
- Cross walks available meta data standards like MODS 3.0 and Dublin Core
- Technical Processing of items received through Acquisitions and Serials Management

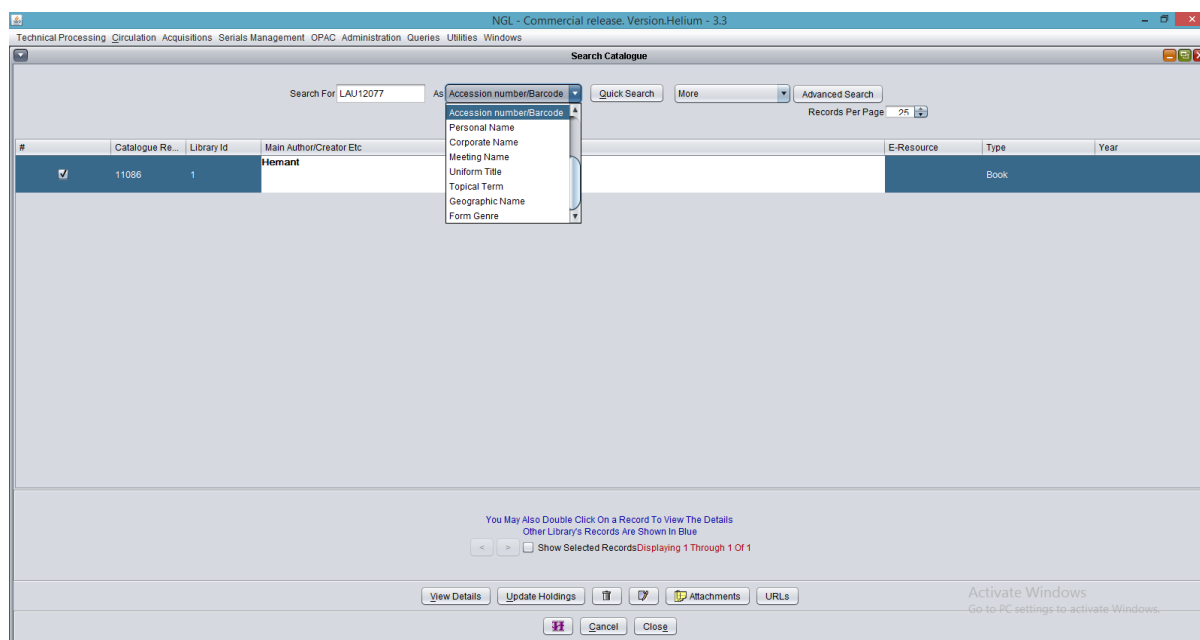


Fig 4: ILMS Technical Processing Menu

Circulation

- Check out (Issues)
- Check in (Returns)
- Reserve items
- Recall items on loan
- Renew items on loan
- Inter Library Loans management
- Process items lost
- Weed out process
- Binding management
- Automatic overdue notices and reminder for renewals
- Emails and SMS facility

Registrar
Atmiya University
Rajkot

Atmiya University, Rajkot-Gujarat-India



 ATMIYA UNIVERSITY	NAAC – Cycle – 1	
	AISHE: U-0967	
	Criterion 4	I&LR
	KI 4.2	M 4.2.1

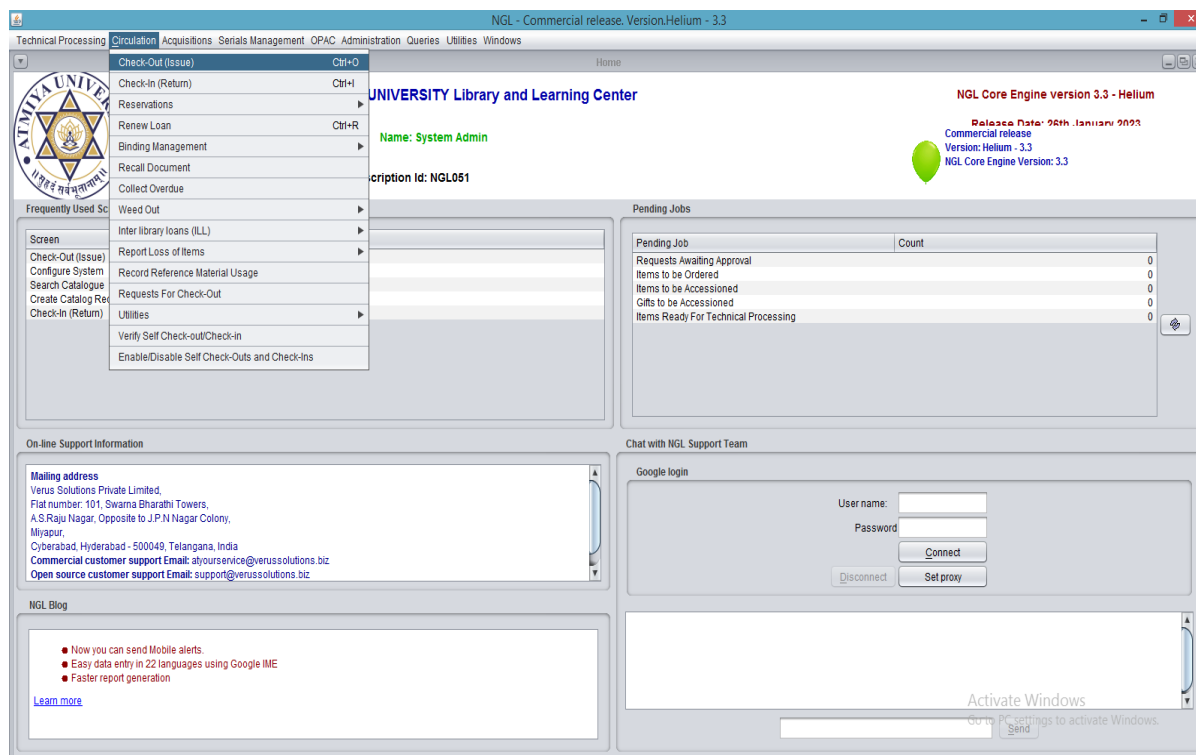


Fig 5: ILMS Circulation System


Registrar
Atmiya University
Rajkot

Atmiya University, Rajkot-Gujarat-India



 ATMIYA UNIVERSITY	NAAC – Cycle – 1	
	AISHE: U-0967	
	Criterion 4	I&LR
	KI 4.2	M 4.2.1

Acquisitions

- Request process (suggestions from users)
- Process On-approvals from Vendors
- Raise Orders
- Receive orders (Invoice and Item processing)
- Accession received items
- Process payments
- Budget management
- Record payment details
- Claims for items not supplied
- Solicited and Unsolicited gift processing
- Quotation process (Request for quotations, Generate comparative statements)

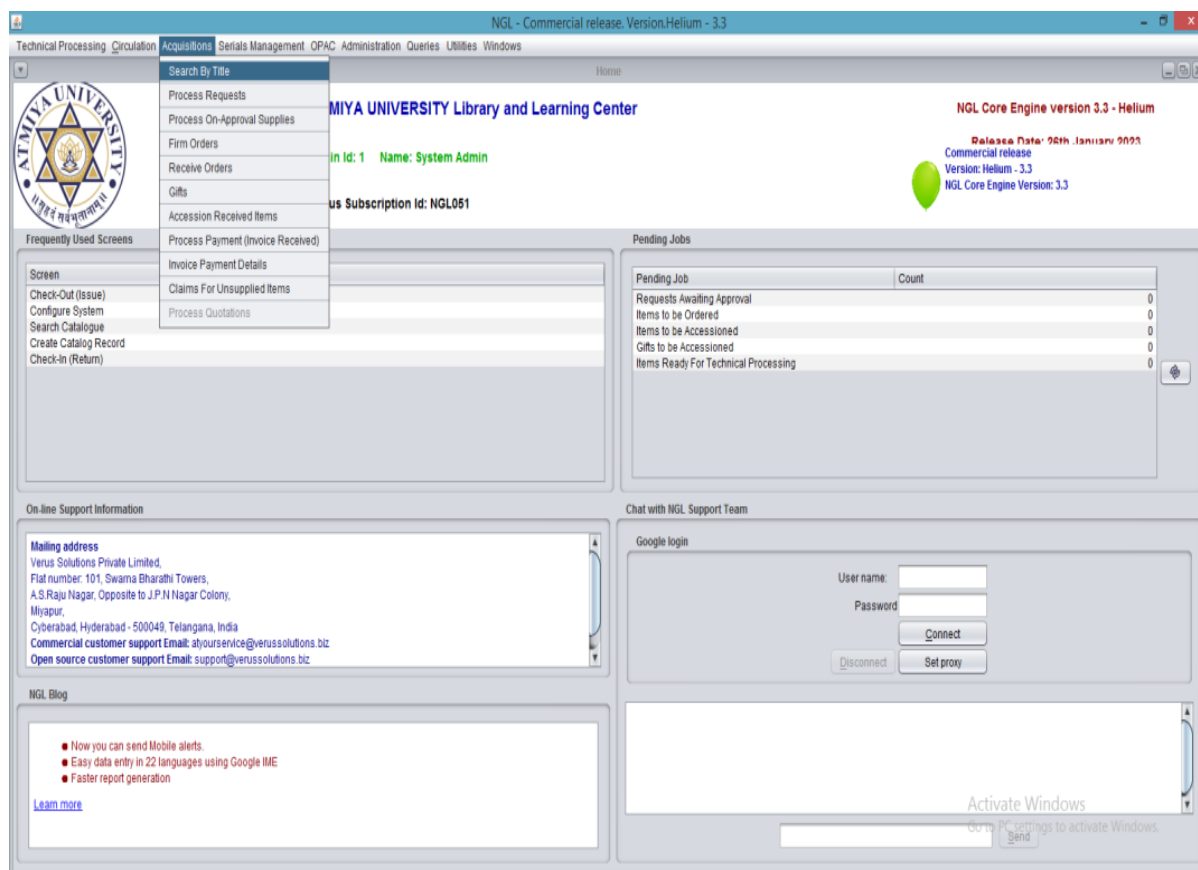


Fig 6: ILMS Acquisition System



Registrar
Atmiya University
Rajkot

Atmiya University, Rajkot-Gujarat-India



 ATMIYA UNIVERSITY	NAAC – Cycle – 1	
	AISHE: U-0967	
	Criterion 4	I&LR
	KI 4.2	M 4.2.1

Serials management

- Process subscription list
- Raise firm order
- Receive Invoice
- Register (Check-in) serial issues (manages even Combined issues, Supplement issues, Special issues, out-of-turn receipts, Indexes, Delayed issues, No longer available issues)
- Binding Management
 - Preparation of Logical lists and Physical lists
 - Raising binding orders
 - Accessioning Bound Volumes
- Auto-claim (Reminder) generation for 'Not received' issues

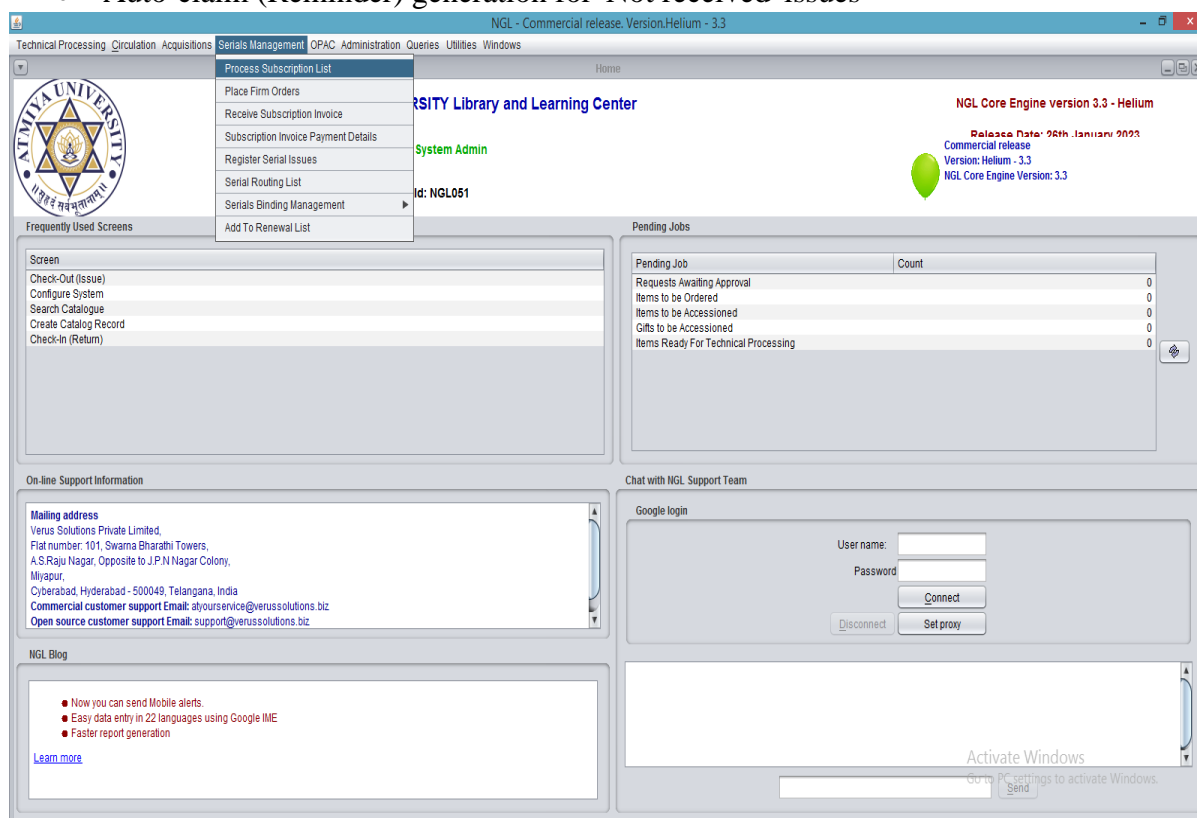


Fig: 7 ILMS Circulation System


Registrar
Atmiya University
Rajkot

Atmiya University, Rajkot-Gujarat-India



 ATMIYA UNIVERSITY	NAAC – Cycle – 1	
	AISHE: U-0967	
	Criterion 4	I&LR
	KI 4.2	M 4.2.1

Web OPAC

- Various types of searches
 - Free text (Google like search)
 - Basic
 - Advanced
 - Expert
- Reserve items on line and Cancel reservations on line
- Renew items on line
- View circulation transactions transacted and user privileges by the user on line
- Top stories (View headlines through RSS feeds configured)
- Define SDI (Selective Dissemination of Information) profile
- List of new arrivals
- Suggest new books to be acquired on line
- View special collections in the library.
- Supports Vufind OPAC system (<http://www.vufind.org>)

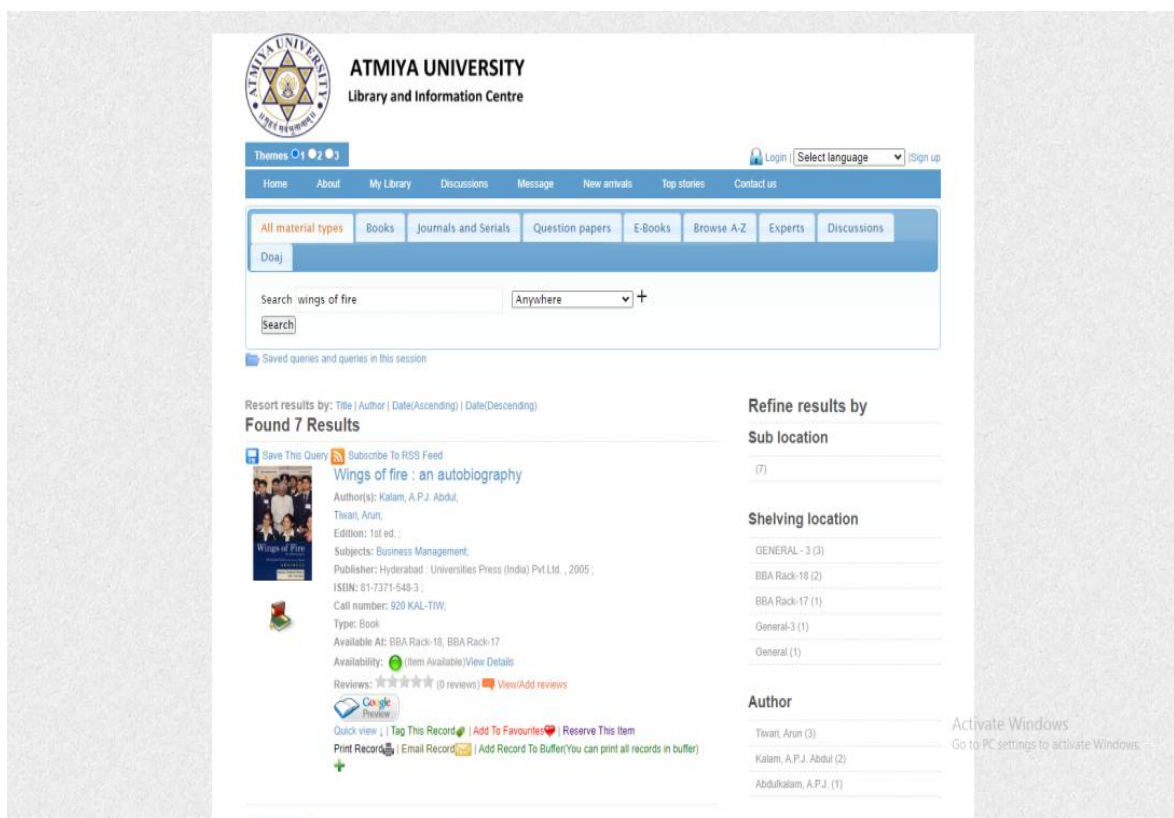


Fig 8: ILS WebOPAC

Registrar
Atmiya University
Rajkot

Atmiya University, Rajkot-Gujarat-India



 ATMIYA UNIVERSITY	NAAC – Cycle – 1	
	AISHE: U-0967	
	Criterion 4	I&LR
	KI 4.2	M 4.2.1

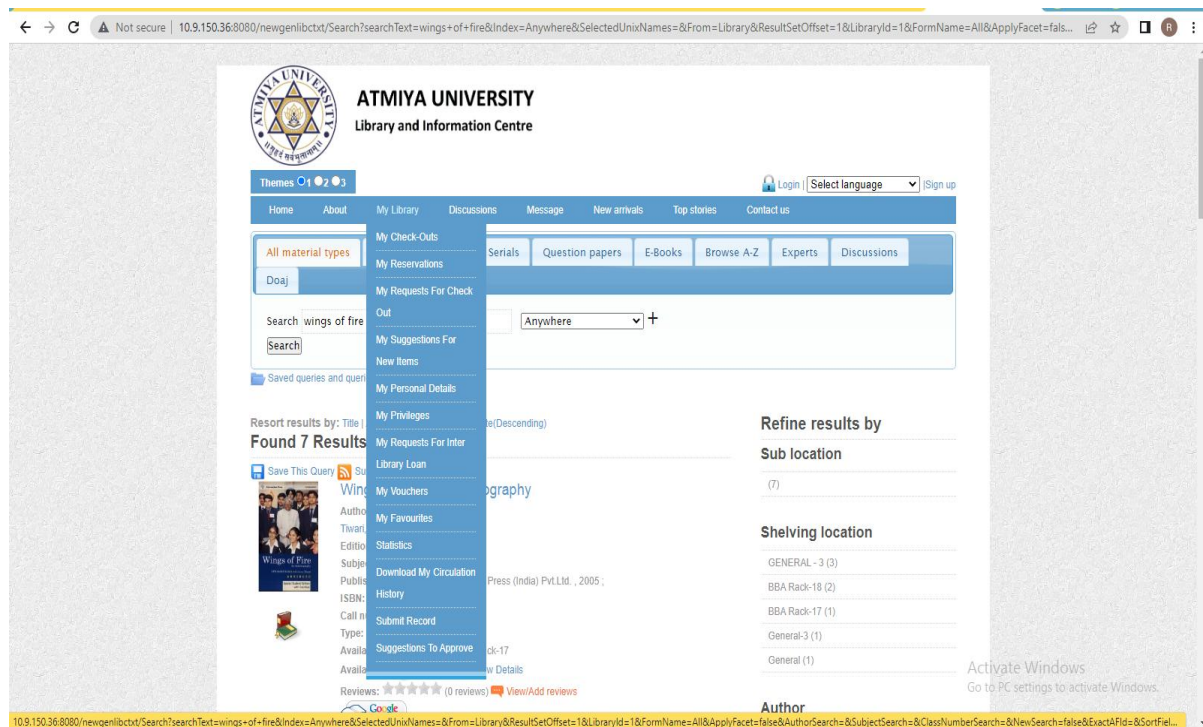


Fig 9: ILMS WebOPAC features


Registrar
Atmiya University
Rajkot

Atmiya University, Rajkot-Gujarat-India



 ATMIYA UNIVERSITY	NAAC – Cycle – 1	
	AISHE: U-0967	
	Criterion 4	I&LR
	KI 4.2	M 4.2.1

Reports

- Acquisitions
 - Accession register
 - Budget expenditure
 - vendor performance

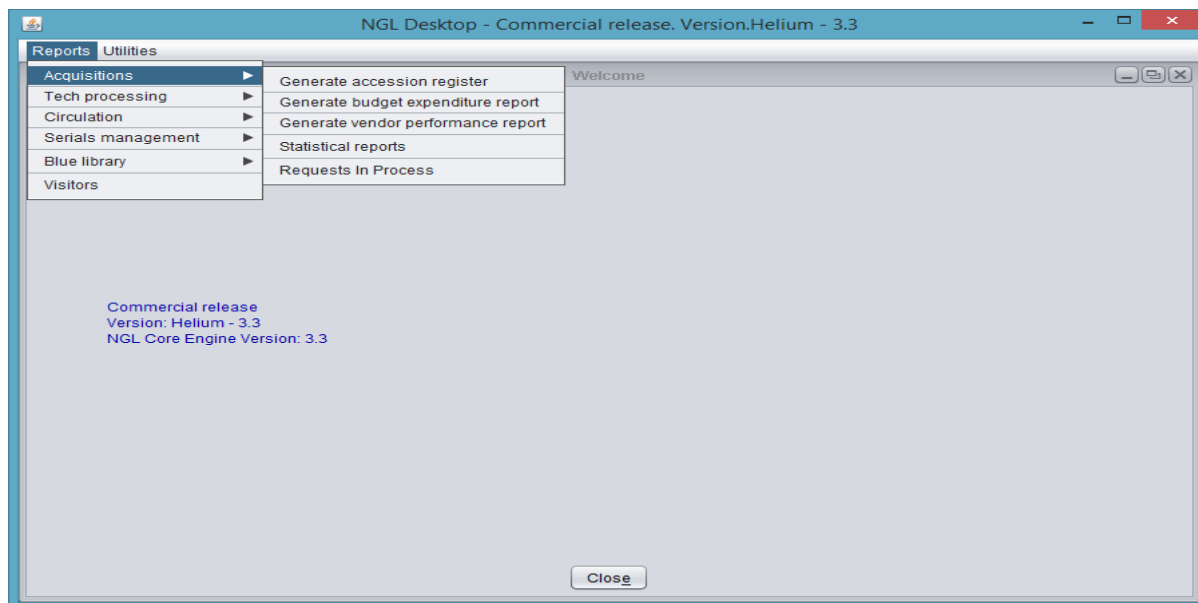
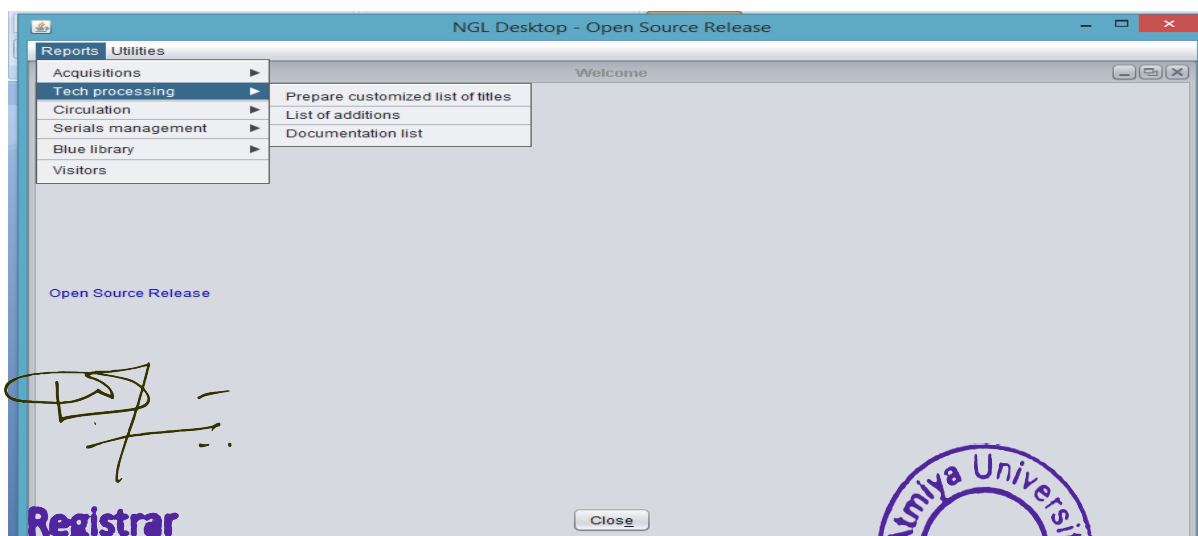


Fig 10: ILMS Reports Modules

- Technical Processing
 - Customized list of titles
 - List of new arrivals
 - Documentation list



Registrar

Atmiya University
Rajkot

Atmiya University, Rajkot-Gujarat-India

Fig11: ILMS WebOPAC



 ATMIYA UNIVERSITY	NAAC – Cycle – 1	
	AISHE: U-0967	
	Criterion 4	I&LR
	KI 4.2	M 4.2.1

- Circulation
 - Stock verification
 - Checked out material details
 - Current reservations
 - Detailed Circulation Transaction
 - Overdue material
 - Patron List (Users List)
 - Items reported lost
 - Daily Circulation Transaction
 - Items under binding

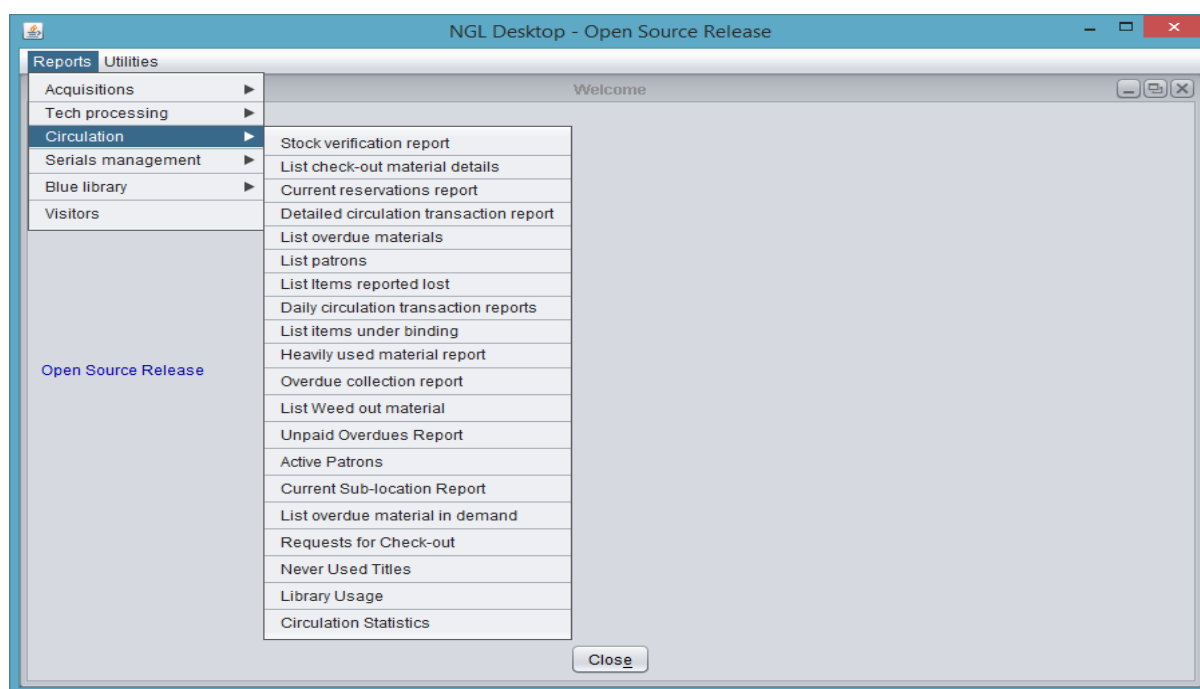


Fig 12: ILMS Reports Circulation module



Registrar
Atmiya University
Rajkot

Atmiya University, Rajkot-Gujarat-India



 ATMIYA UNIVERSITY	NAAC – Cycle – 1	
	AISHE: U-0967	
	Criterion 4	I&LR
	KI 4.2	M 4.2.1

- Serials management
 - Current subscriptions
 - Duplicate issues
 - Missing issues
 - Unfulfilled subscriptions
 - Current arrivals
 - Budget expenditure
 - List of subscriptions

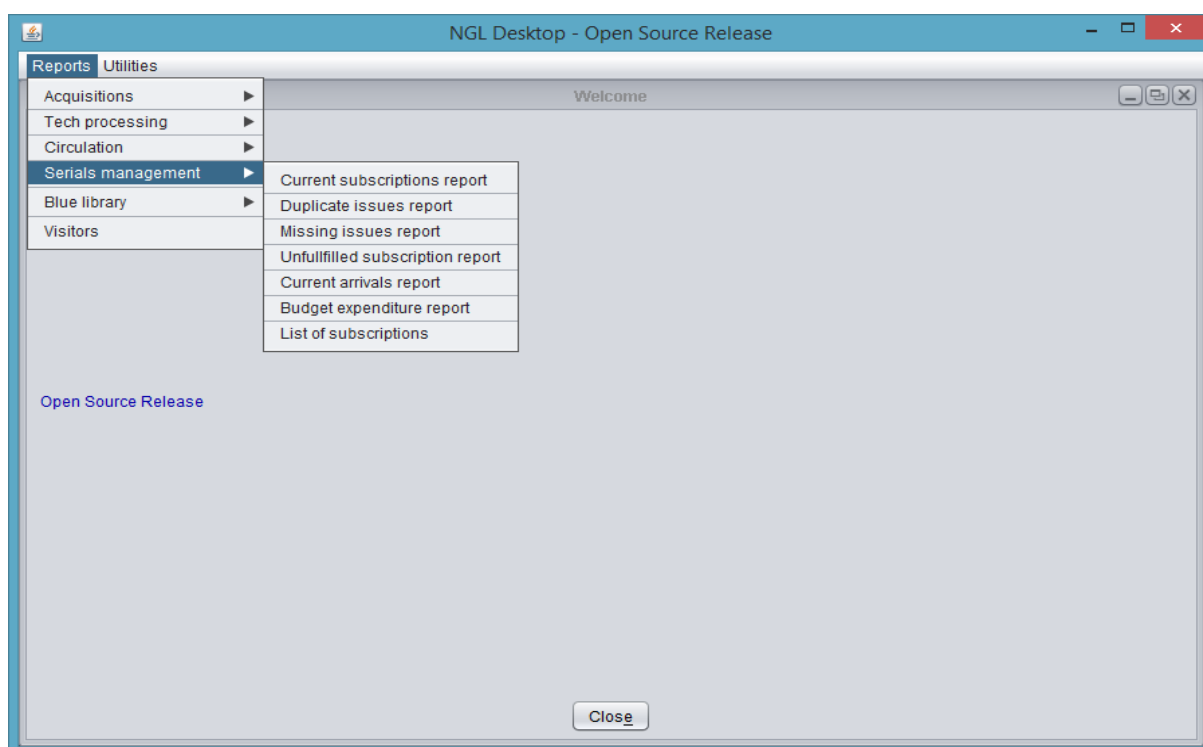


Fig 13: ILMS Reports Serial Management module



Registrar
Atmiya University
Rajkot

Atmiya University, Rajkot-Gujarat-India

