

 ATMIYA UNIVERSITY	NAAC – Cycle – 1 AISHE: U-0967	
	Criterion- 3	R,I & E
	KI 3.1	M 3.1.1

3.1.1	The institution's Research facilities are frequently updated and there are well defined policy for promotion of research which is uploaded on the institutional website and implemented
-------	---

Additional Information Modules of the ILMS – NewGenLib 3.3

The detailed technical features of the ILMS are as follows:

Functional modules are completely web-based. Uses **Java Web Start™** Technology

- Compatibility - Complies with international metadata and interoperability standards: **MARC-21, MARC-XML, z39.50, SRU/W, OAI-PMH**
- Uses chiefly **open source** components
- Scalable, manageable and efficient
- **OS independent** - Windows and Linux flavors available
- **z39.50 Client** for **federated** searching
- Internationalized application (I18N)
- **Unicode 4.0** complaint
- Easily extensible to **support other languages**
- Data entry, storage, retrieval in any (**Unicode 4.0**) language
- **RFID integration**
- **Networking** – Hierarchical and Distributed networks
- **Automated email/instant messaging** integrated into different functions of the software
- Form letters are configurable and use **XML-based Open Office templates**
- Extensive use of **set up parameters** enabling easy configuration of the software to suit specific needs, e.g., in defining patron privileges
- **Supports multi-user** and multiple security levels
- Allows digital attachments to metadata



Atmiya University, Rajkot-Gujarat-India

Registrar
Atmiya University
Rajkot



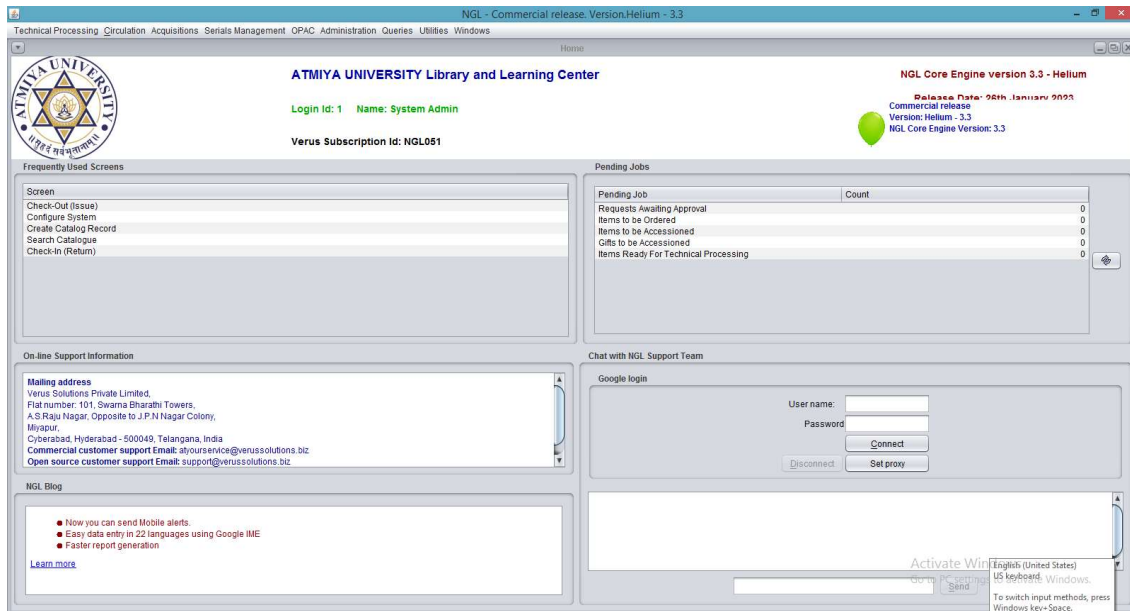
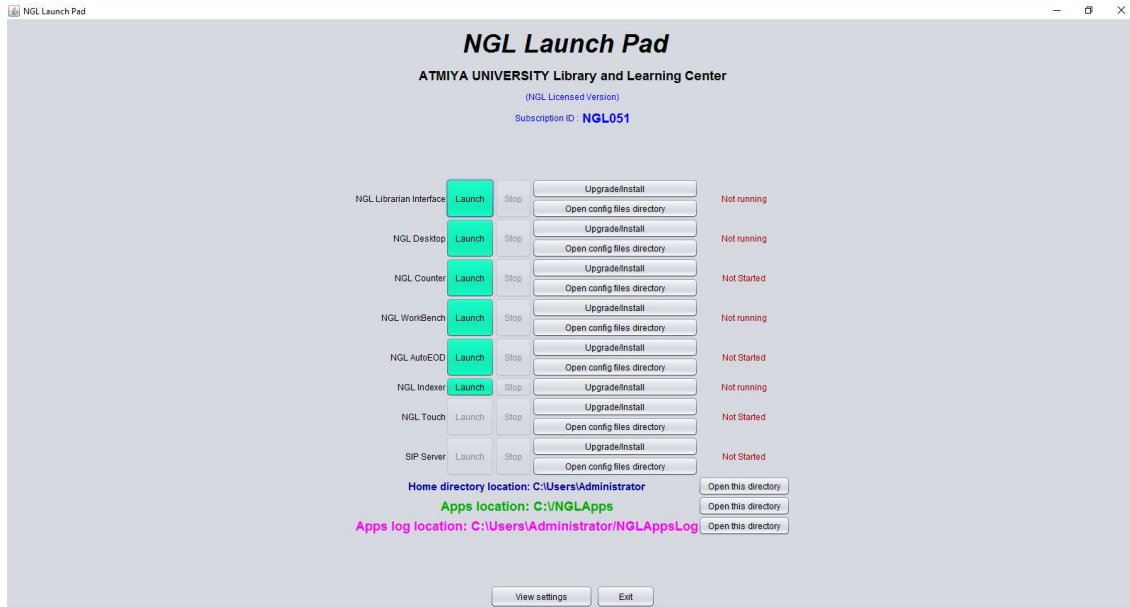


Fig 1: The Home page of the ILMS

Technical Processing (Cataloguing)

Import Bibliographic data

- From other libraries' OPACs
- Primary or Original Cataloguing
 - Provides 3 different templates for Cataloguing: Simple, General and MARC21 Templates
 - Compliant to MARC21 for Bibliographic, Authority and Holdings Data
 - Supports all material types (By MARC21)





- Open Archive support (OAI-PMH protocol compliant)
- Attach digital content along with catalogue record
- Customizable MARC21 templates and Search indexes

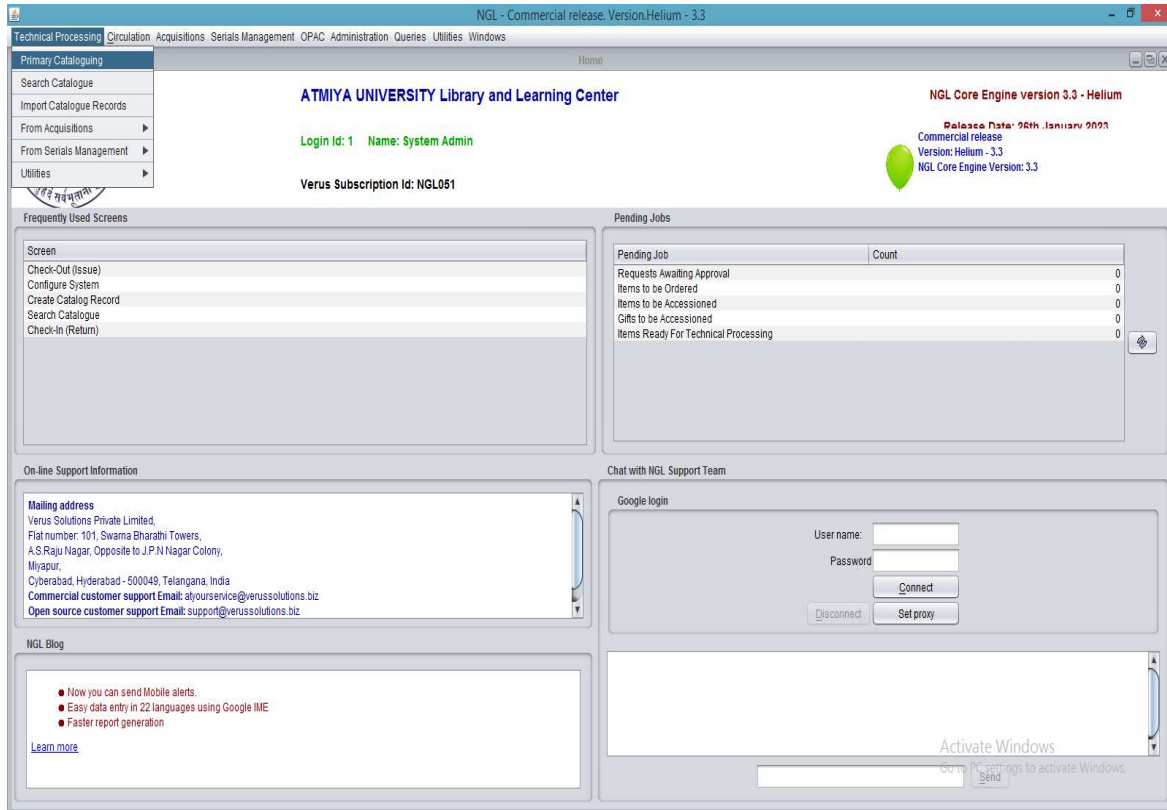


Fig 2: ILMS Technical Processing Menu

Atmiya University, Rajkot-Gujarat-India

Registrar

**Atmiya University
Rajkot**



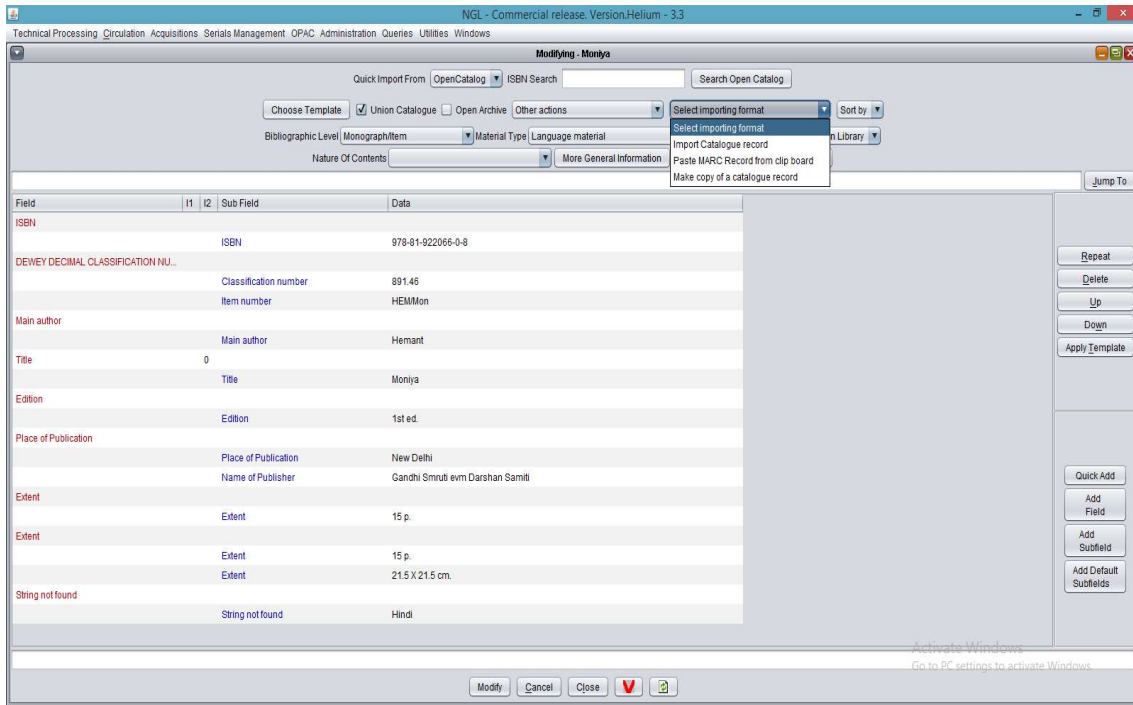


Fig 3: ILMS Cataloguing Module

- Search catalogue
 - Search catalogue through various system defined Indexes
 - Library can also define custom indexes
- Cross walks available meta data standards like MODS 3.0 and Dublin Core
- Technical Processing of items received through Acquisitions and Serials Management

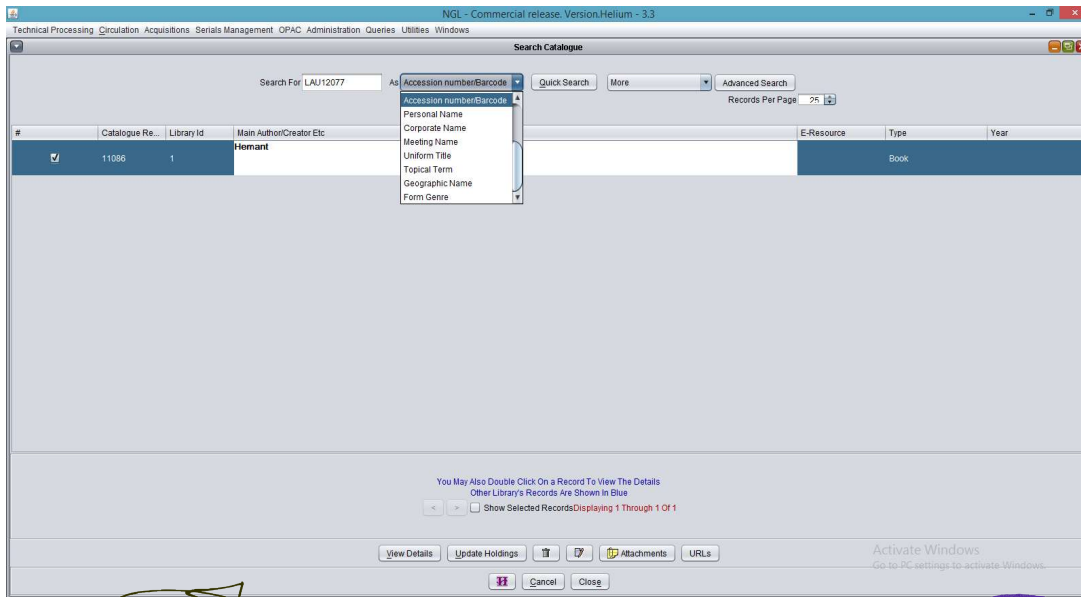


Fig 4: ILMS Technical Processing Menu





Circulation

- Check out (Issues)
- Check in (Returns)
- Reserve items
- Recall items on loan
- Renew items on loan
- Inter Library Loans management
- Process items lost
- Weed out process
- Binding management
- Automatic overdue notices and reminder for renewals
- Emails and SMS facility

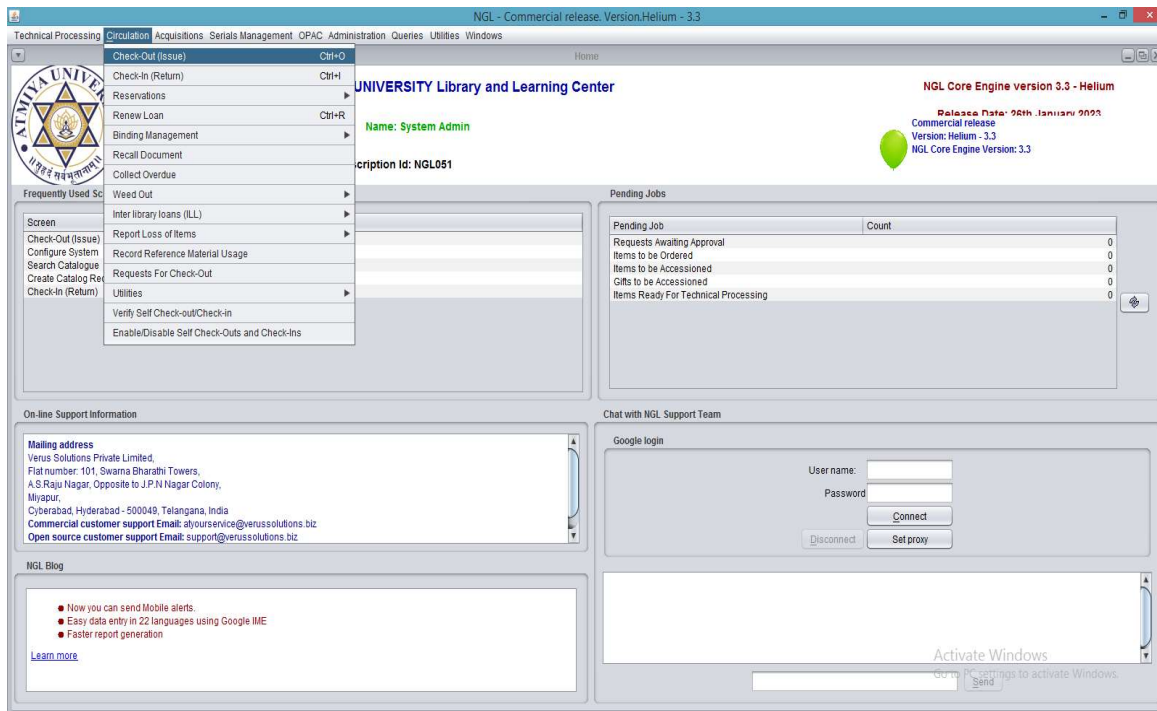


Fig 5: ILMS Circulation System

Atmiya University, Rajkot-Gujarat-India

Registrar

**Atmiya University
Rajkot**



 ATMIYA UNIVERSITY	NAAC – Cycle – 1	
	AISHE: U-0967	
	Criterion- 3	R,I & E
	KI 3.1	M 3.1.1

Acquisitions

- Request process (suggestions from users)
- Process On-approvals from Vendors
- Raise Orders
- Receive orders (Invoice and Item processing)
- Accession received items
- Process payments
- Budget management
- Record payment details
- Claims for items not supplied
- Solicited and Unsolicited gift processing
- Quotation process (Request for quotations, Generate comparative statements)

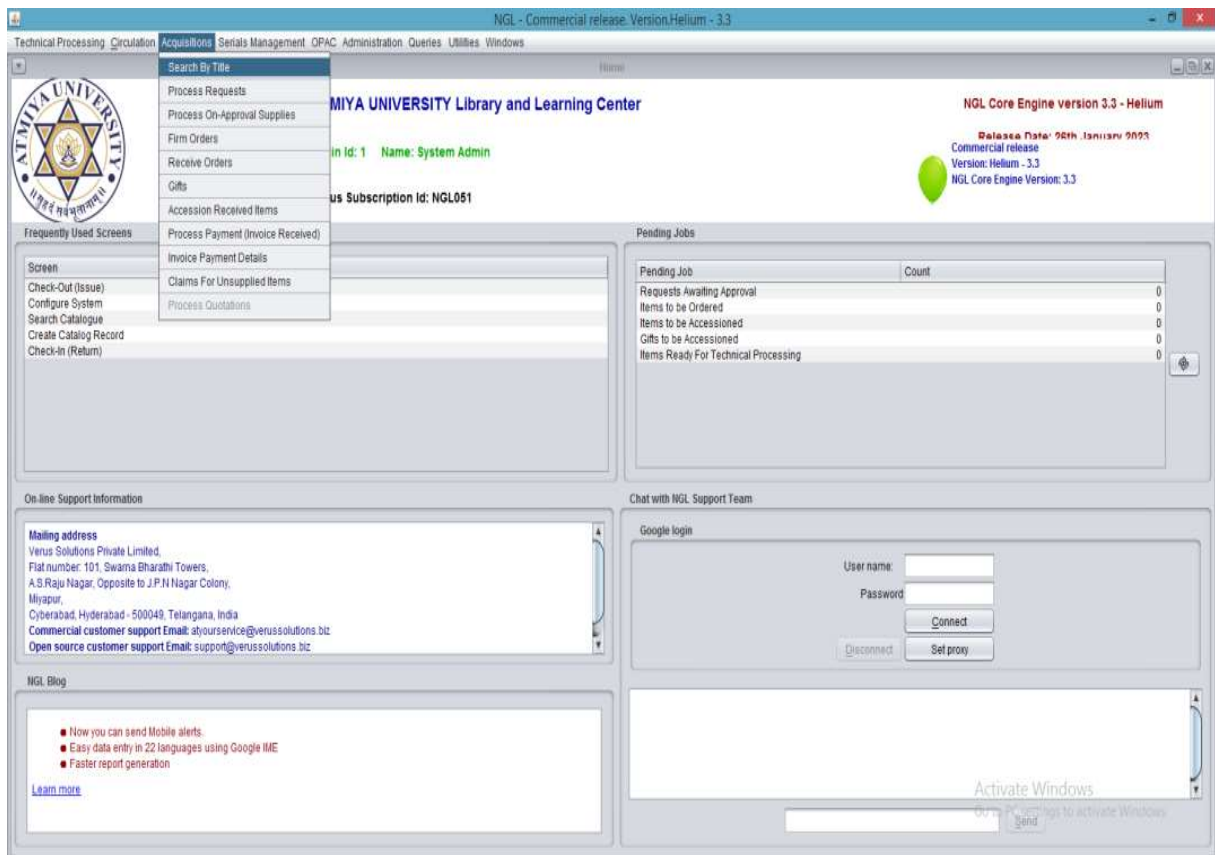


Fig 6: ILMS Acquisition System



Serials management

- Process subscription list
- Raise firm order
- Receive Invoice
- Register (Check-in) serial issues (manages even Combined issues, Supplement issues, Special issues, out-of-turn receipts, Indexes, Delayed issues, No longer available issues)
- Binding Management
 - Preparation of Logical lists and Physical lists
 - Raising binding orders
 - Accessioning Bound Volumes
- Auto-claim (Reminder) generation for 'Not received' issues

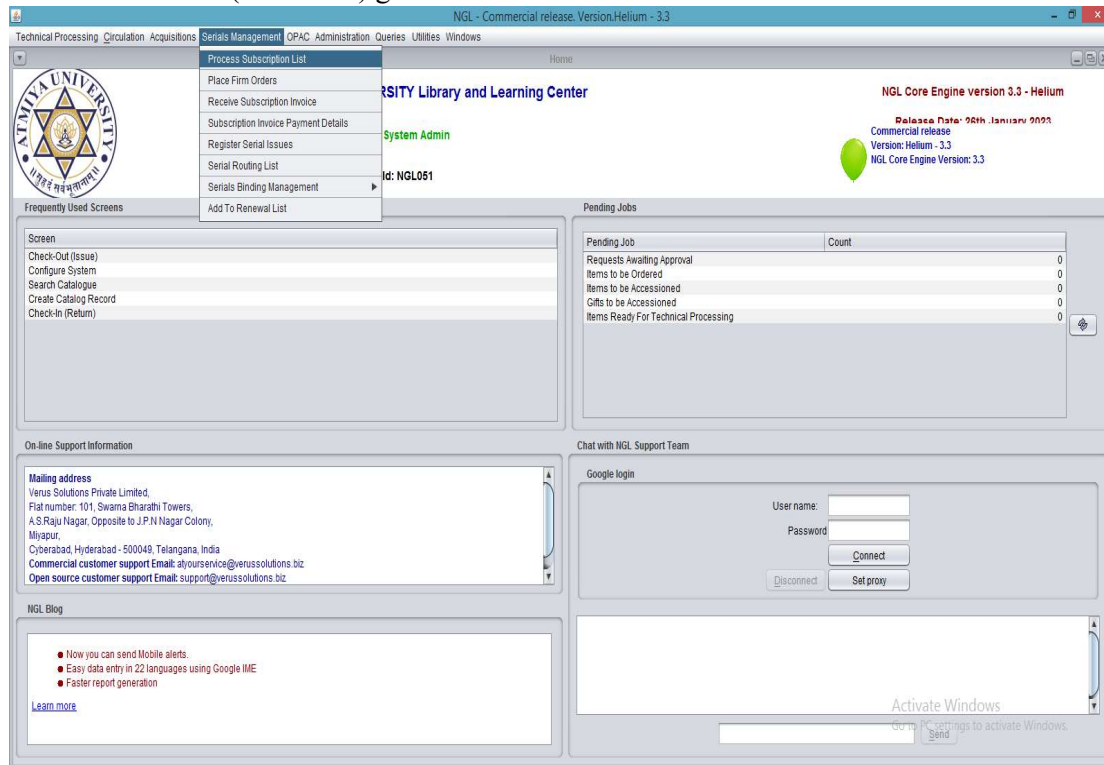


Fig: 7 ILMS Circulation System

Atmiya University, Rajkot-Gujarat-India

Registrar

**Atmiya University
Rajkot**





Web OPAC

- Various types of searches
 - Free text (Google like search)
 - Basic
 - Advanced
 - Expert
- Reserve items on line and Cancel reservations on line
- Renew items on line
- View circulation transactions transacted and user privileges by the user on line
- Top stories (View headlines through RSS feeds configured)
- Define SDI (Selective Dissemination of Information) profile
- List of new arrivals
- Suggest new books to be acquired on line
- View special collections in the library.
- Supports Vufind OPAC system (<http://www.vufind.org>)

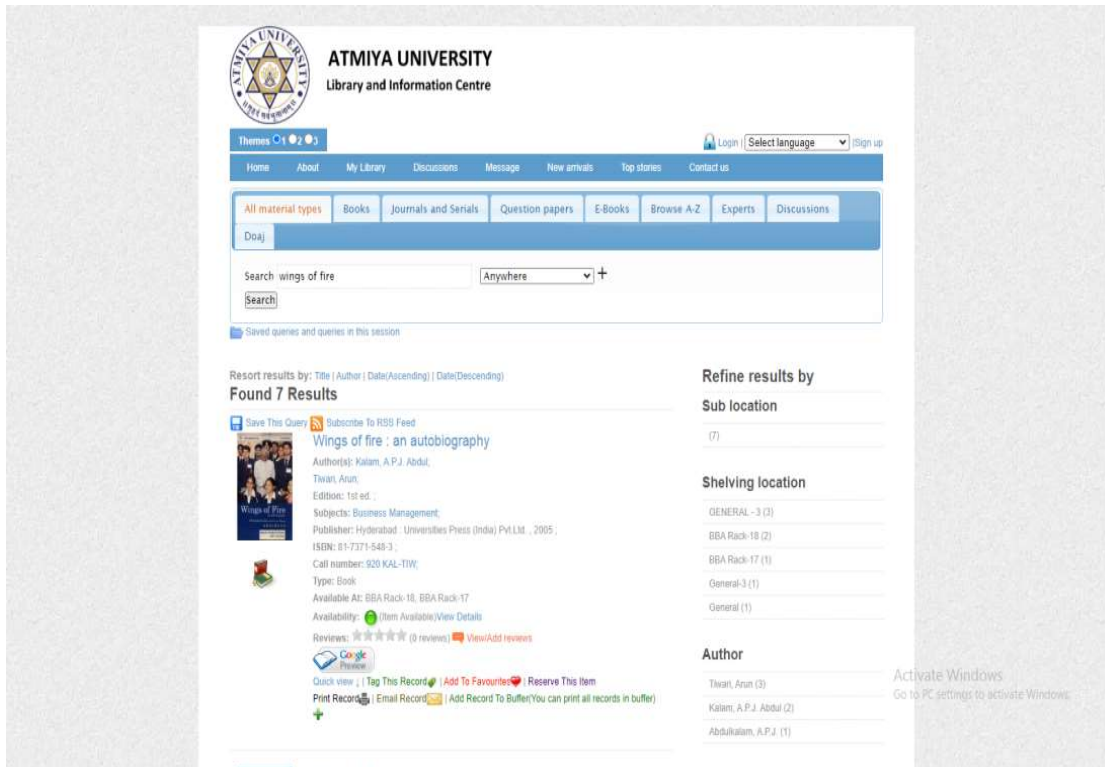


Fig 8: ILMs WebOPAC

Atmiya University, Rajkot-Gujarat-India

Registrar

**Atmiya University
Rajkot**



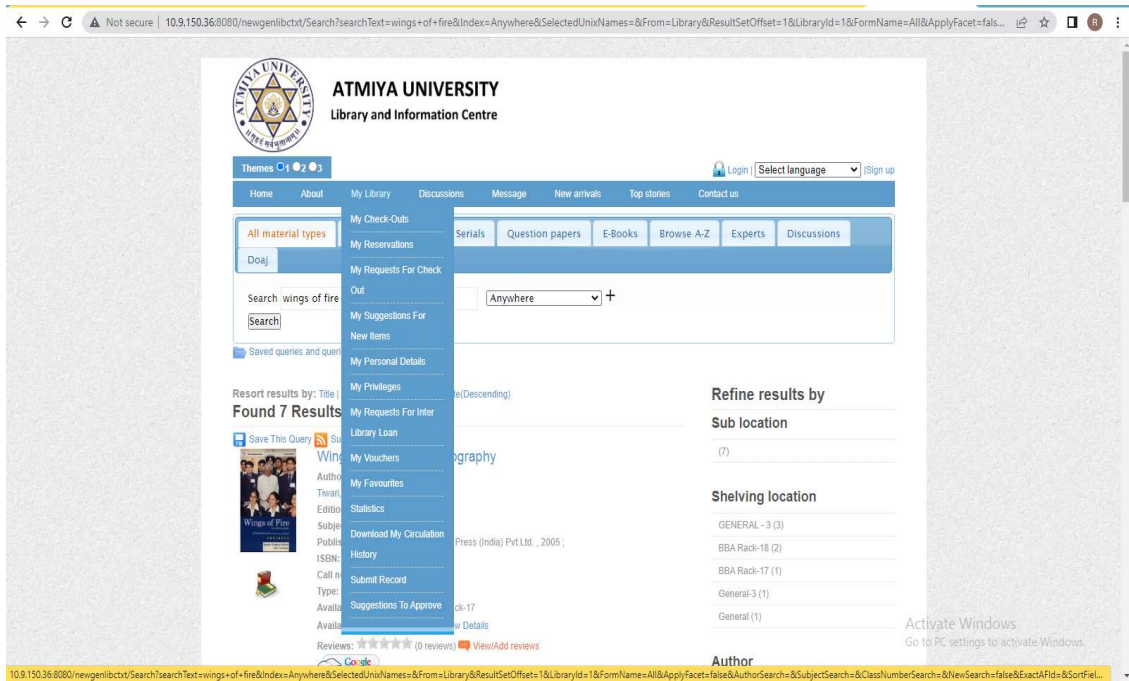


Fig 9: ILMS WebOPAC features

Atmiya University, Rajkot-Gujarat-India

Registrar

**Atmiya University
Rajkot**





Reports

- Acquisitions
 - Accession register
 - Budget expenditure
 - vendor performance

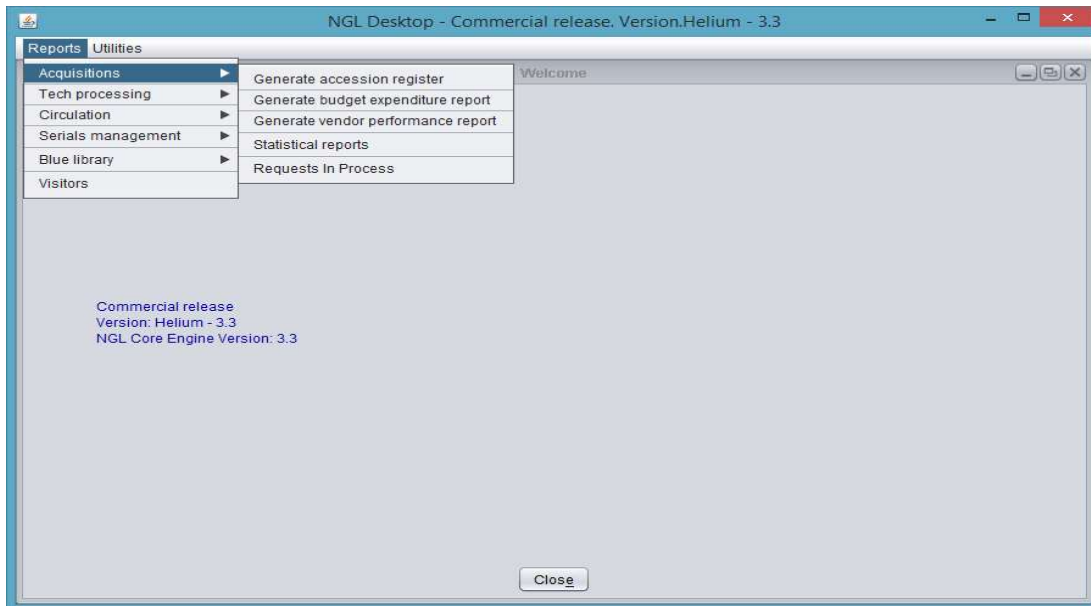


Fig 10: ILMS Reports Modules

- Technical Processing
 - Customized list of titles
 - List of new arrivals
 - Documentation list

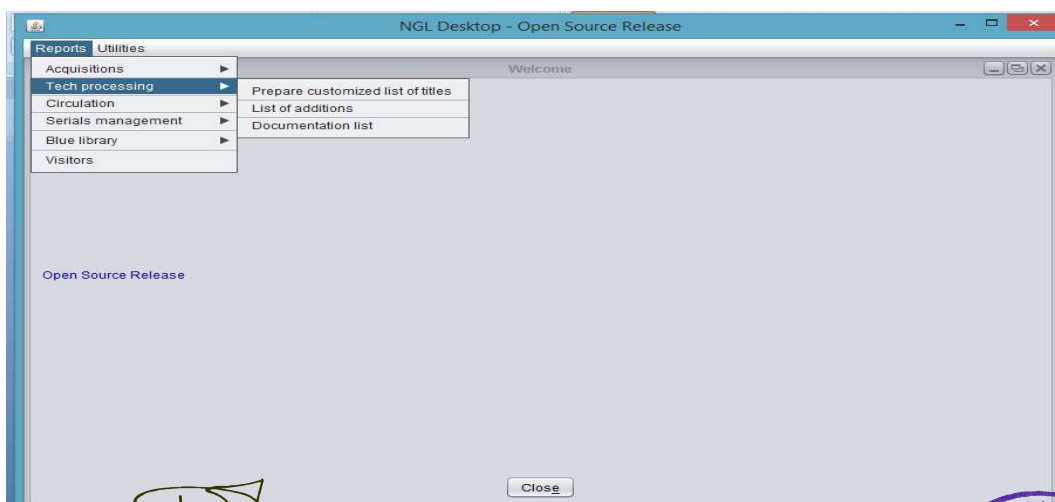


Fig11: ILMS WebOPAC



- Circulation
 - Stock verification
 - Checked out material details
 - Current reservations
 - Detailed Circulation Transaction
 - Overdue material
 - Patron List (Users List)
 - Items reported lost
 - Daily Circulation Transaction
 - Items under binding

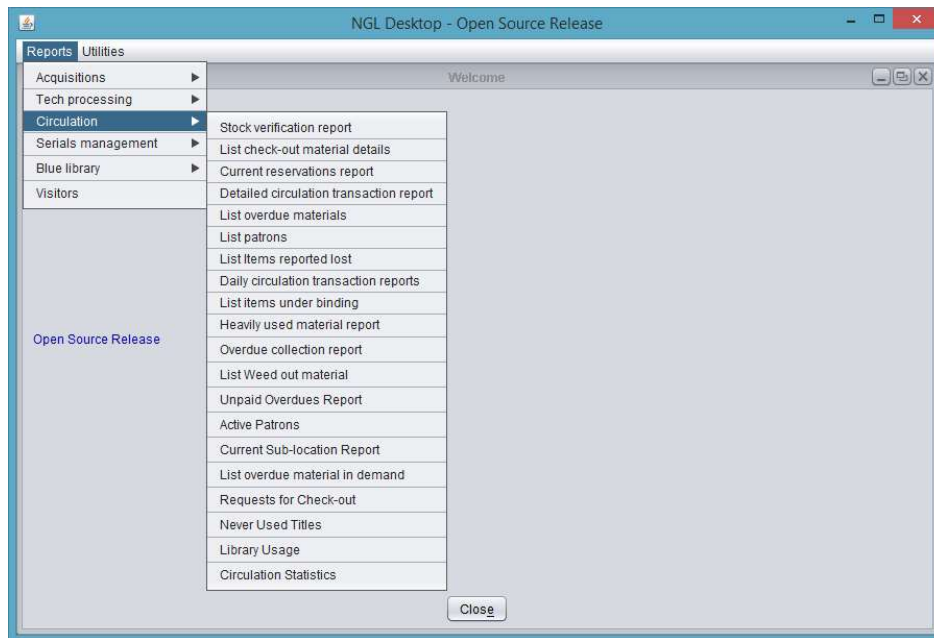


Fig 12: ILMS Reports Circulation module

Atmiya University, Rajkot-Gujarat-India

Registrar

**Atmiya University
Rajkot**





- Serials management
 - Current subscriptions
 - Duplicate issues
 - Missing issues
 - Unfulfilled subscriptions
 - Current arrivals
 - Budget expenditure
 - List of subscriptions

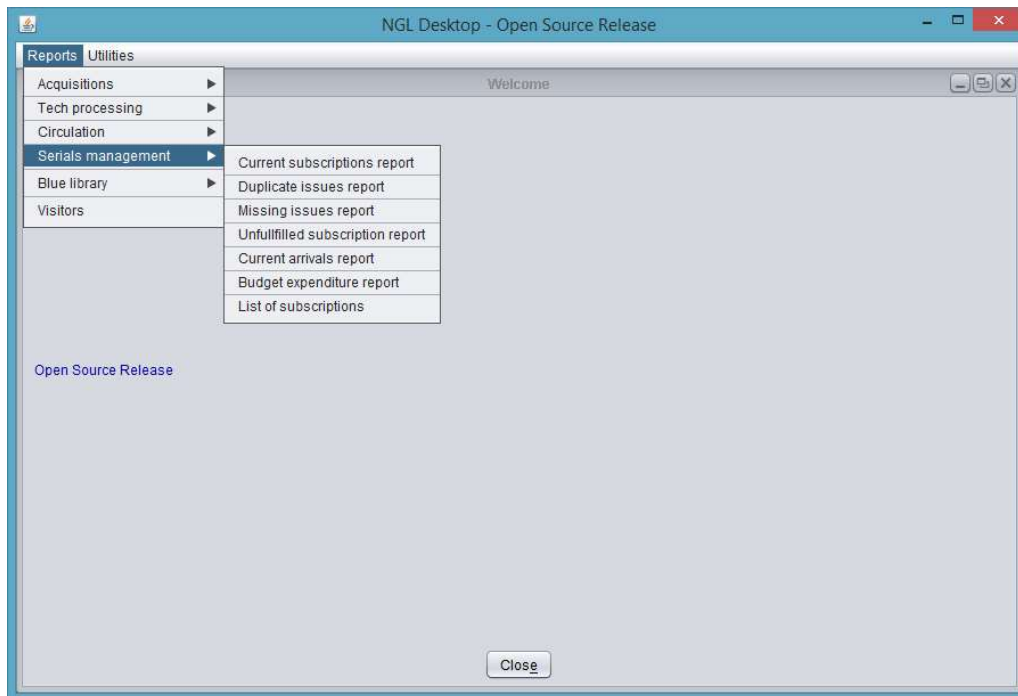


Fig 13: ILMS Reports Serial Management module

Atmiya University, Rajkot-Gujarat-India

Registrar

**Atmiya University
Rajkot**

