



3.1.1

The institution's Research facilities are frequently updated and there are well defined policy for promotion of research which is uploaded on the institutional website and implemented

Facility for Research Support

S.N.	Particulars	Page No.
1	Cold Room (4 °C and -20 °C)	2
2	Hydraulic Gas Plant	3
3	Chidakash - Maintenance Cell	4
4	Pilot Plant	5
5	Electricity Control Panel & Green Power Backup	6
6	Wet Scrubber Air Pollution Control	7
7	Medicinal Plant Garden	8
8	Niramay Hostel	9
9	Aswad Mess – Swat less Kitchen with AHU	10
10	Solar Rooftop Power Generation Facility	11



Cold Room (4 °C and -20 °C)



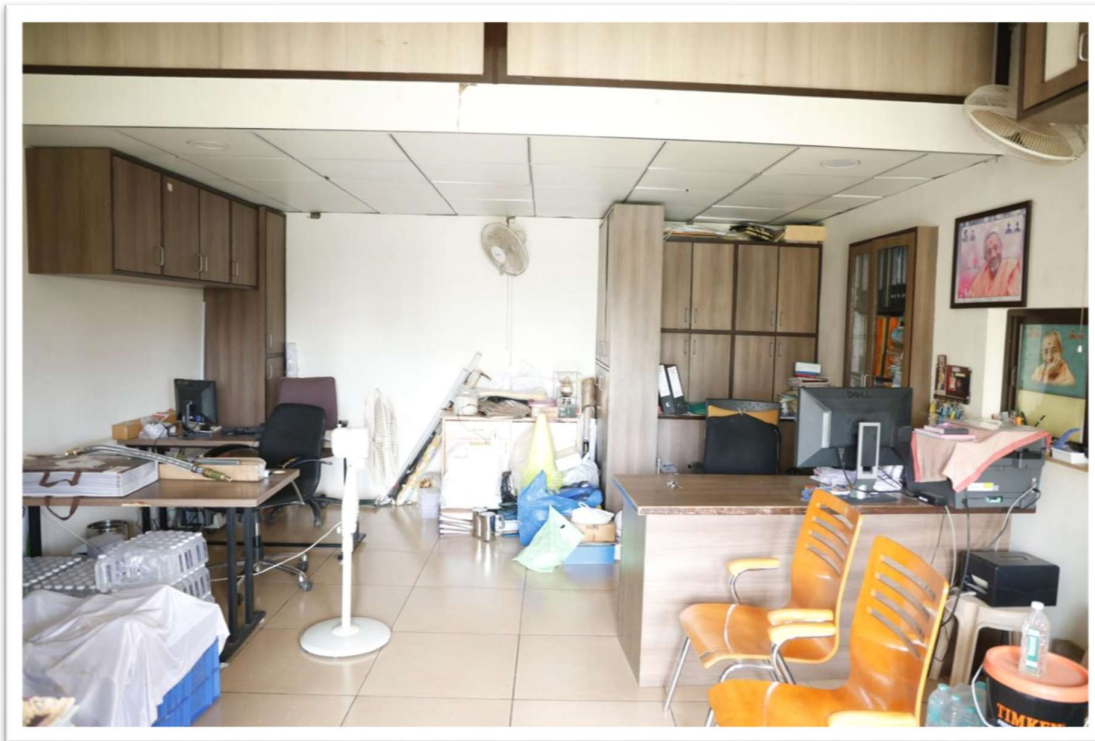


Hydraulic Gas Plant



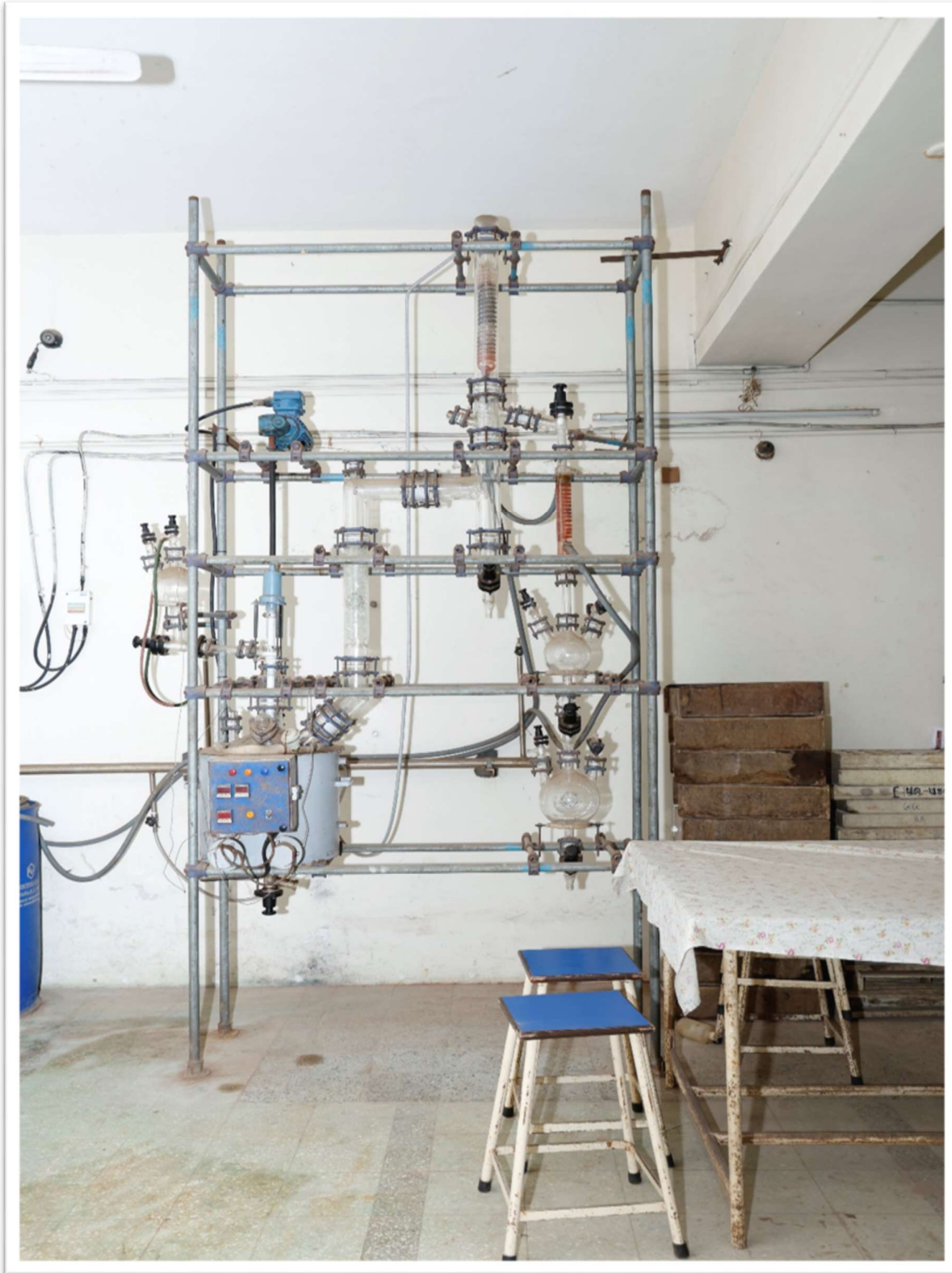


Chidakash - Maintenance Cell





Pilot Plant



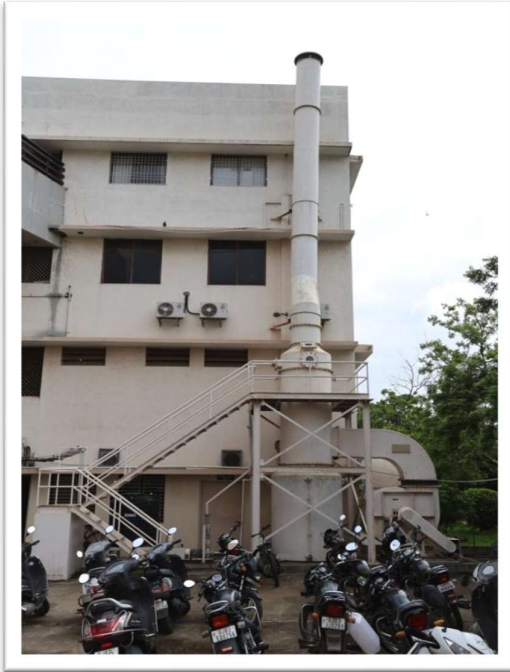


Electricity Control Panel & Green Power Backup





Wet Scrubber Air Pollution Control





Medicinal Plant Garden





**ATMIYA
UNIVERSITY**

NAAC – Cycle – 1
AISHE: U-0967

Criterion- III

R, I & E

KI 3.1

M 3.1.1

Niramay Hostel



Registrar
Atmiya University, Rajkot, Gujarat-India
Atmiya University
Rajkot





Aswad Mess – Swat less Kitchen with AHU





Solar Rooftop Power Generation Facility



Registrar
Atmiya University, Rajkot, Gujarat-India
Atmiya University
Rajkot

