

 <b>ATMIYA UNIVERSITY</b>	<b>NAAC – Cycle – 1</b> <b>AISHE: U-0967</b>	
	<b>Criterion- 3</b>	<b>R,I &amp; E</b>
	<b>KI 3.3</b>	<b>M 3.3.1</b>

3.3.1	Institution has created an ecosystem for innovations, Indian Knowledge System (IKS) including awareness about IPR, establishment of IPR cell, Incubation centre and other initiatives for the creation and transfer of technology/knowledge and the outcomes of the same are evident
-------	--

**Additional Information Modules of the ILMS – NewGenLib 3.3**

**The detailed technical features of the ILMS are as follows:**

Functional modules are completely web-based. Uses **Java Web Start™** Technology

- Compatibility - Complies with international metadata and interoperability standards: **MARC-21, MARC-XML, z39.50, SRU/W, OAI-PMH**
- Uses chiefly **open source** components
- Scalable, manageable and efficient
- **OS independent** - Windows and Linux flavors available
- **z39.50 Client** for **federated** searching
- Internationalized application (I18N)
- **Unicode 4.0** complaint
- Easily extensible to **support other languages**
- Data entry, storage, retrieval in any (**Unicode 4.0**) language
- **RFID integration**
- **Networking** – Hierarchical and Distributed networks
- **Automated email/instant messaging** integrated into different functions of the software
- Form letters are configurable and use **XML-based Open Office templates**
- Extensive use of **set up parameters** enabling easy configuration of the software to suit specific needs, e.g., in defining patron privileges
- **Supports multi-user** and multiple security levels
- Allows digital attachments to metadata



**Registrar**  
**Atmiya University**



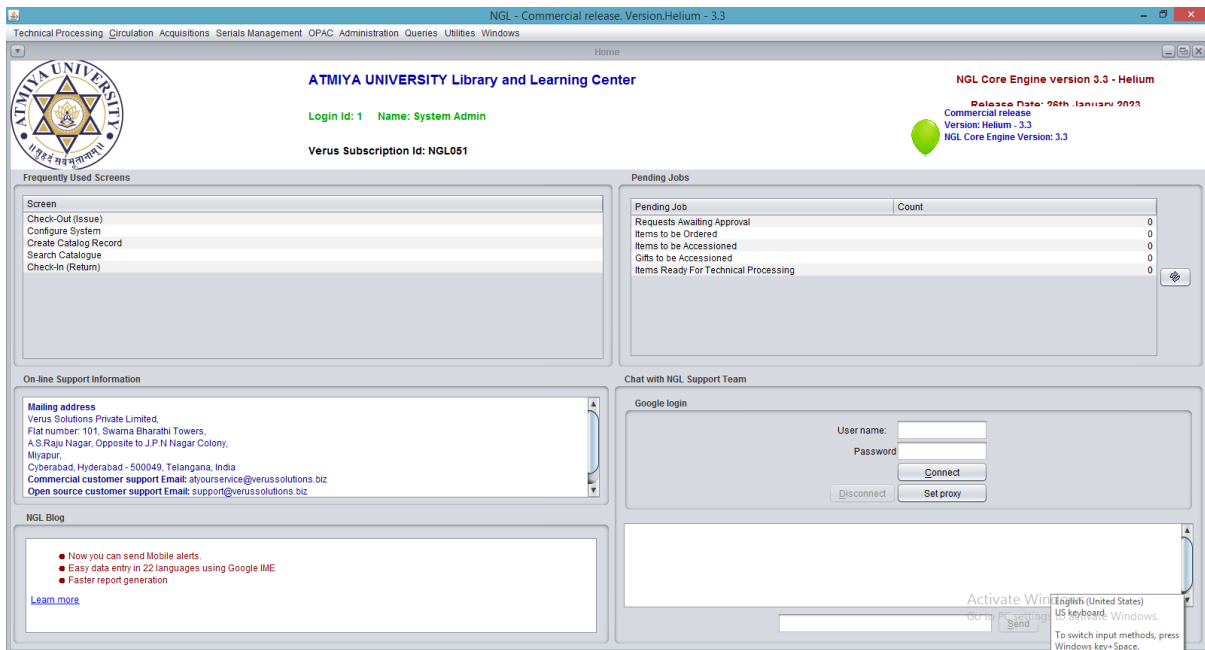
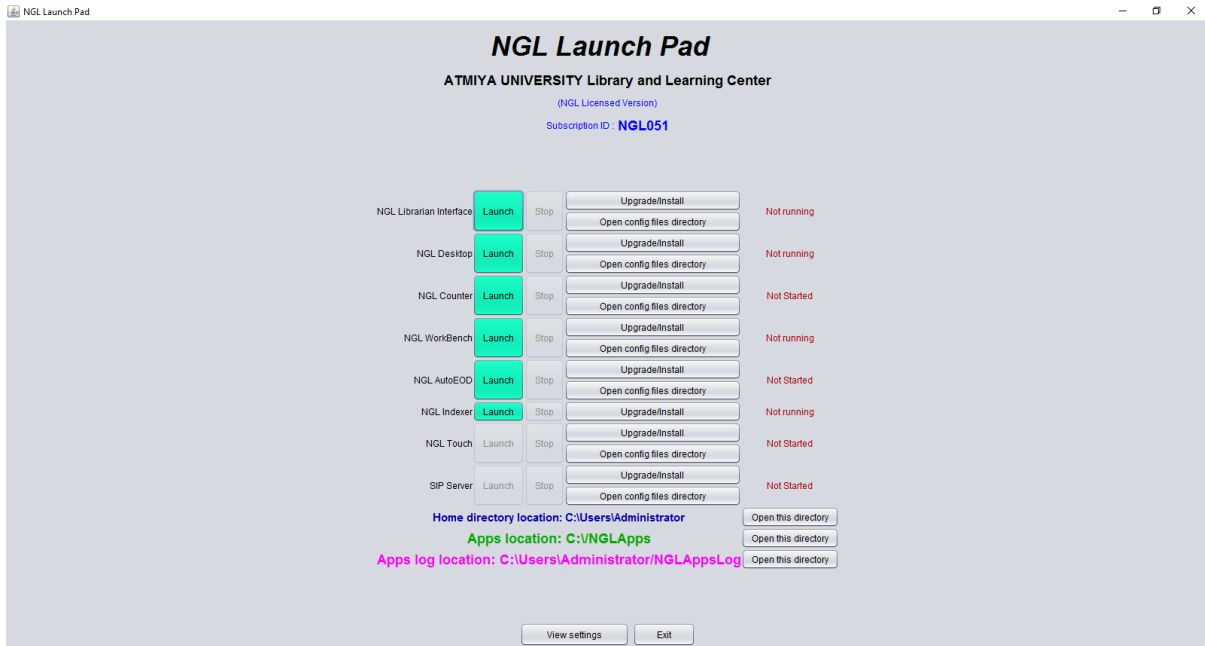


Fig 1: The Home page of the ILMS

## Technical Processing (Cataloguing)

### Import Bibliographic data

- From other libraries' OPACs
- Primary or Original Cataloguing
- Provides 3 different templates for Cataloguing: Simple, General and MARC21 Templates
- Compliant to MARC21 for Bibliographic, Authority and Holdings Data
- Registers all material types (By MARC21)





- Open Archive support (OAI-PMH protocol compliant)
- Attach digital content along with catalogue record
- Customizable MARC21 templates and Search indexes

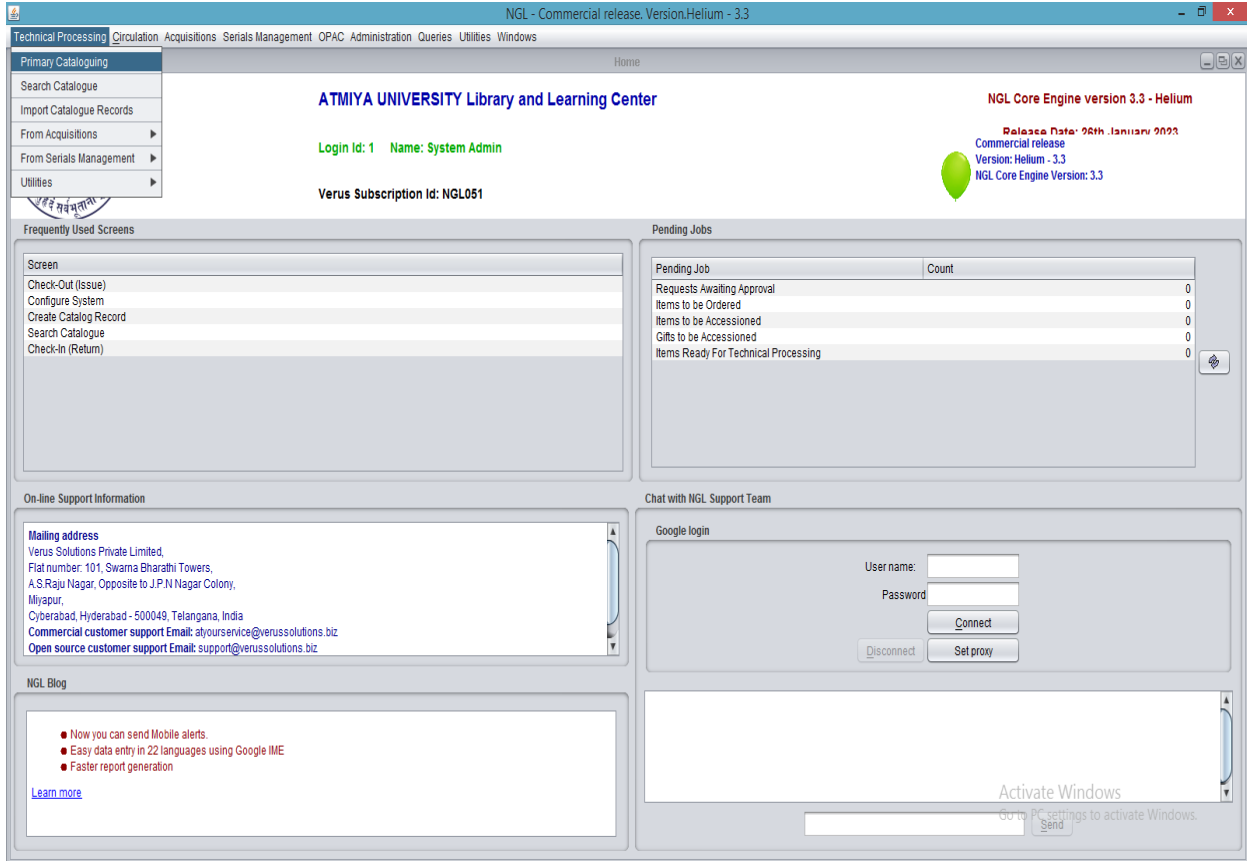


Fig 2: ILMS Technical Processing Menu

**Registrar**  
**Atmiya University**

Atmiya University Rajkot-Rajkot-Gujarat-India



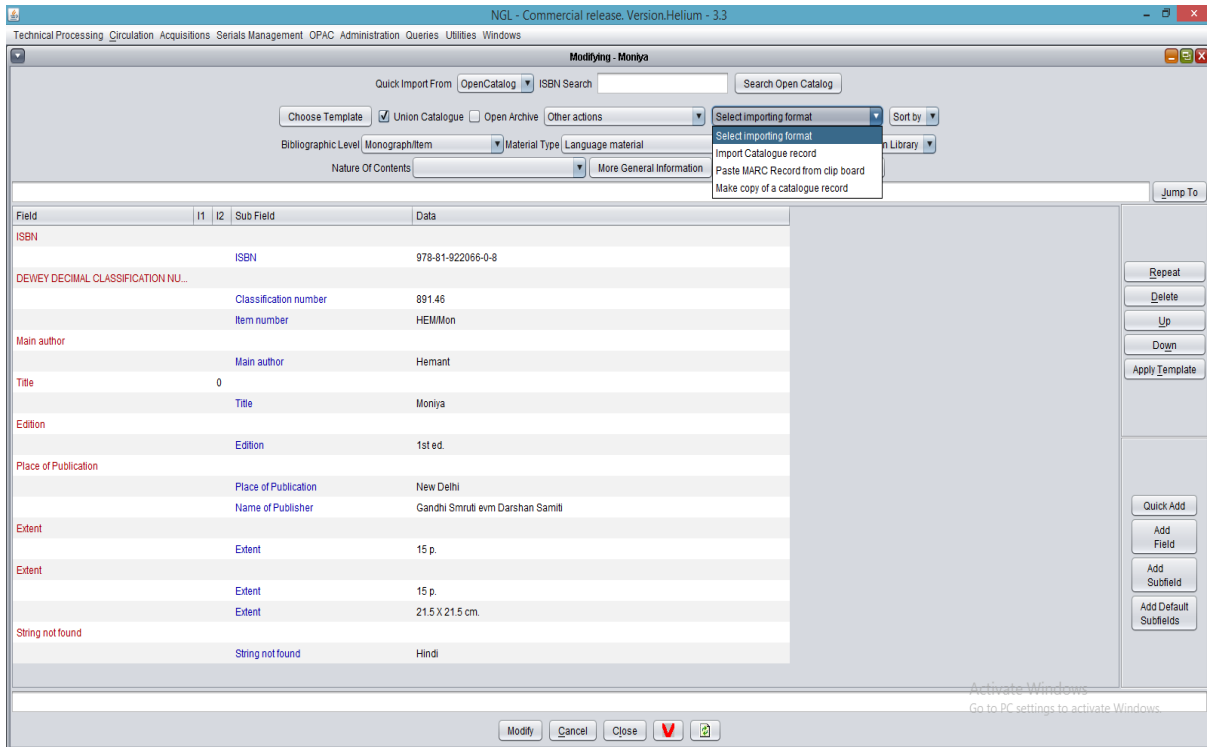


Fig 3: ILMS Cataloguing Module

- Search catalogue
  - Search catalogue through various system defined Indexes
  - Library can also define custom indexes
- Cross walks available meta data standards like MODS 3.0 and Dublin Core
- Technical Processing of items received through Acquisitions and Serials Management

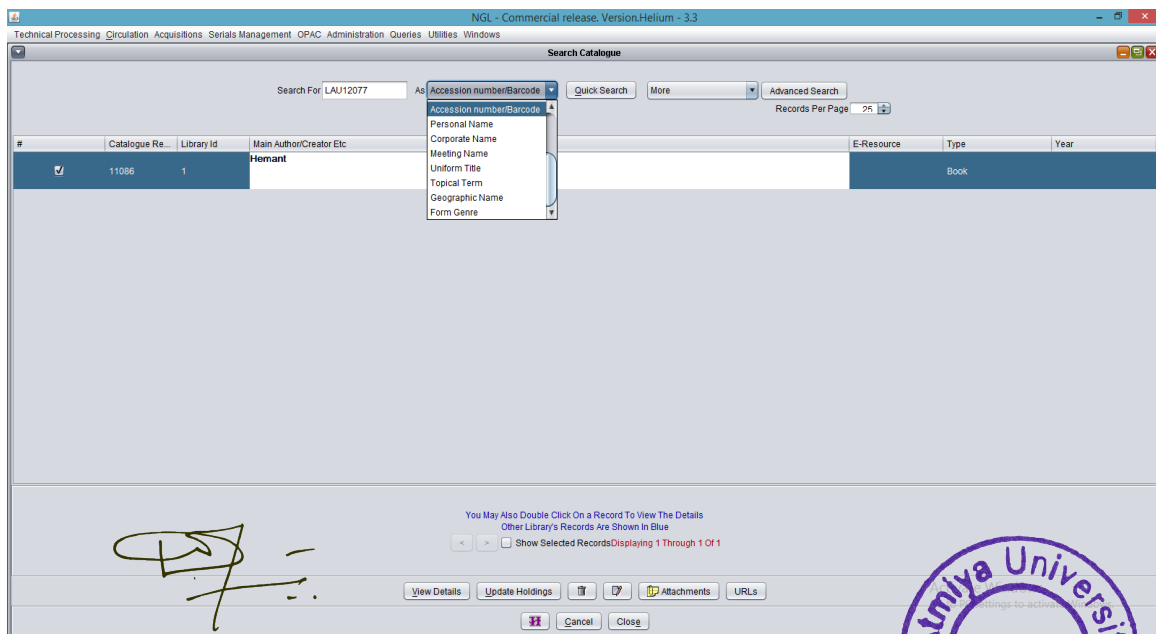


Fig 4: ILMS Technical Processing Menu





## Circulation

- Check out (Issues)
- Check in (Returns)
- Reserve items
- Recall items on loan
- Renew items on loan
- Inter Library Loans management
- Process items lost
- Weed out process
- Binding management
- Automatic overdue notices and reminder for renewals
- Emails and SMS facility

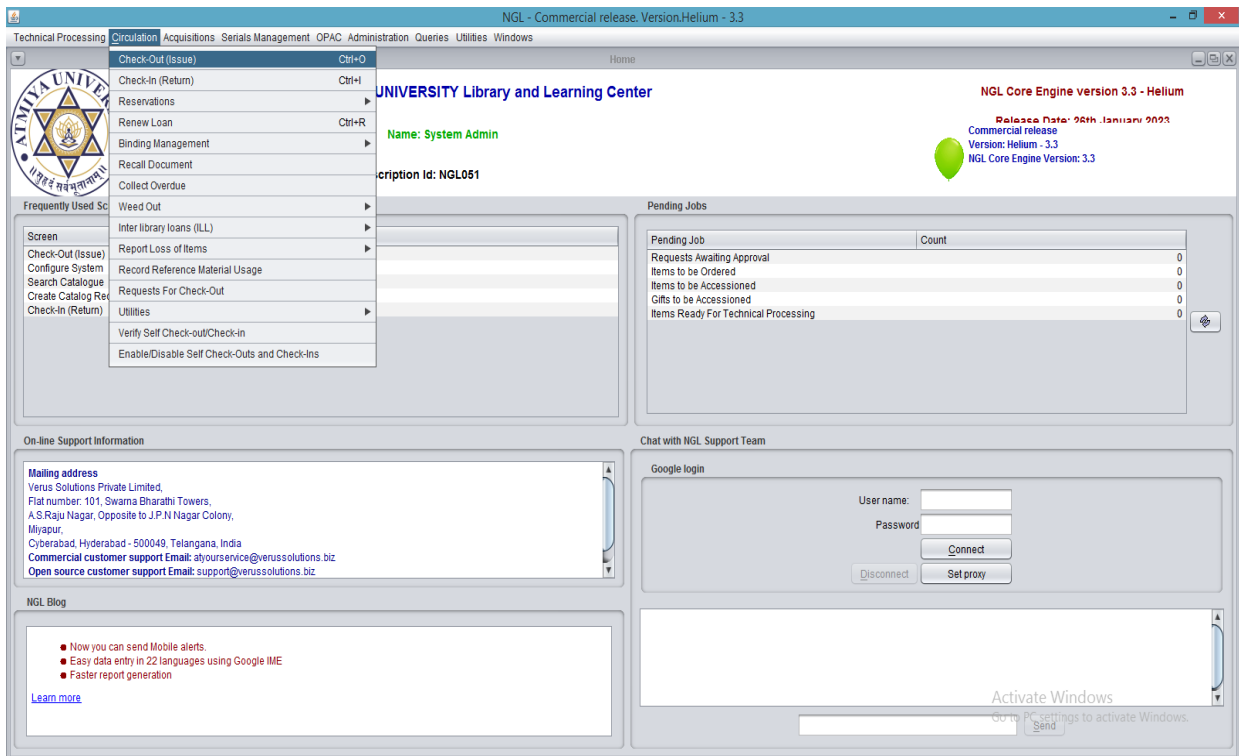


Fig 5: ILMS Circulation System

**Registrar**  
**Atmiya University**

Atmiya University, Rajkot-Gujarat-India





## Acquisitions

- Request process (suggestions from users)
- Process On-approvals from Vendors
- Raise Orders
- Receive orders (Invoice and Item processing)
- Accession received items
- Process payments
- Budget management
- Record payment details
- Claims for items not supplied
- Solicited and Unsolicited gift processing
- Quotation process (Request for quotations, Generate comparative statements)

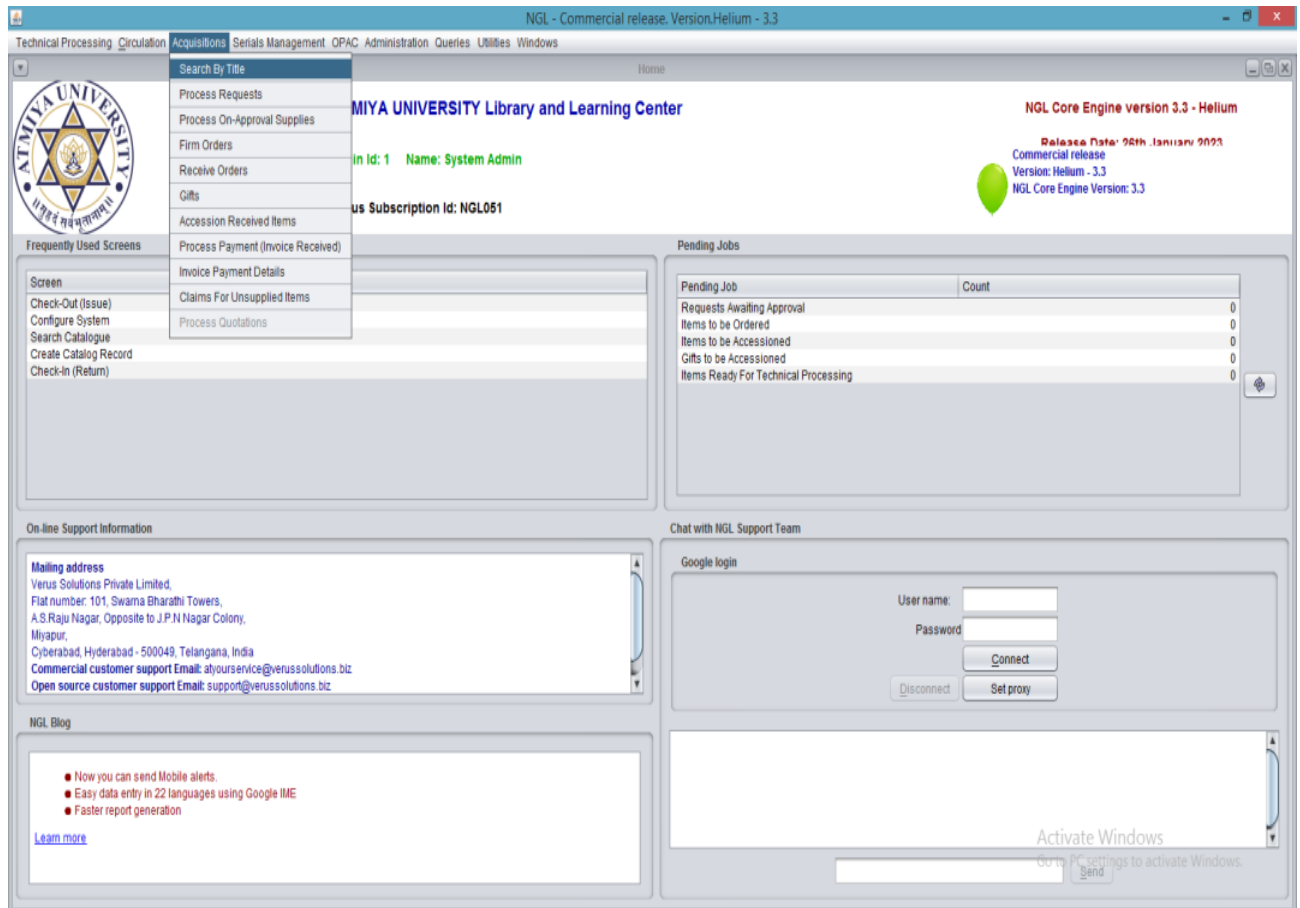


Fig 6: ILMS Acquisition System

**Registrar**  
**Atmiya University**

Atmiya University, Rajkot-Gujarat-India





## Serials management

- Process subscription list
- Raise firm order
- Receive Invoice
- Register (Check-in) serial issues (manages even Combined issues, Supplement issues, Special issues, out-of-turn receipts, Indexes, Delayed issues, No longer available issues)
- Binding Management
  - Preparation of Logical lists and Physical lists
  - Raising binding orders
  - Accessioning Bound Volumes
- Auto-claim (Reminder) generation for 'Not received' issues

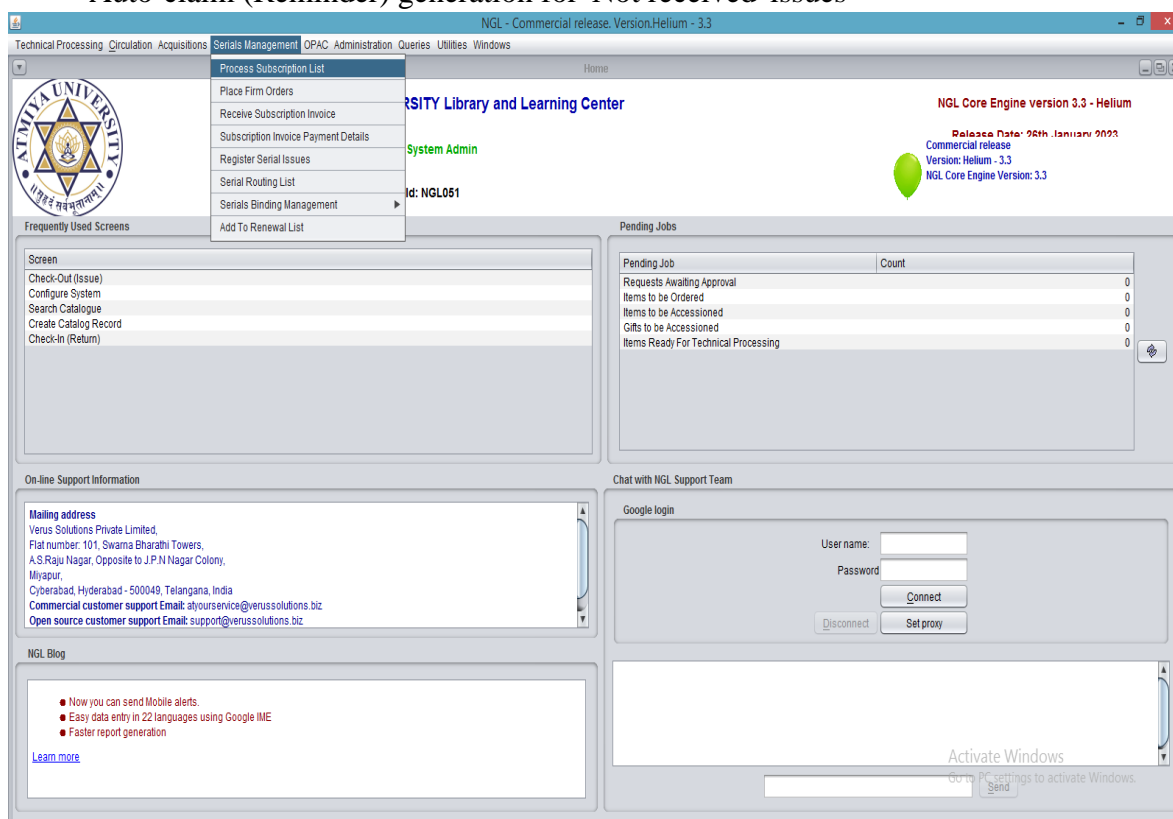


Fig: 7 ILMS Circulation System

**Registrar**  
**Atmiya University**

Atmiya University Rajkot Rajkot-Gujarat-India







## Web OPAC

- Various types of searches
  - Free text (Google like search)
  - Basic
  - Advanced
  - Expert
- Reserve items on line and Cancel reservations on line
- Renew items on line
- View circulation transactions transacted and user privileges by the user on line
- Top stories (View headlines through RSS feeds configured)
- Define SDI (Selective Dissemination of Information) profile
- List of new arrivals
- Suggest new books to be acquired on line
- View special collections in the library.
- Supports Vufind OPAC system (<http://www.vufind.org>)

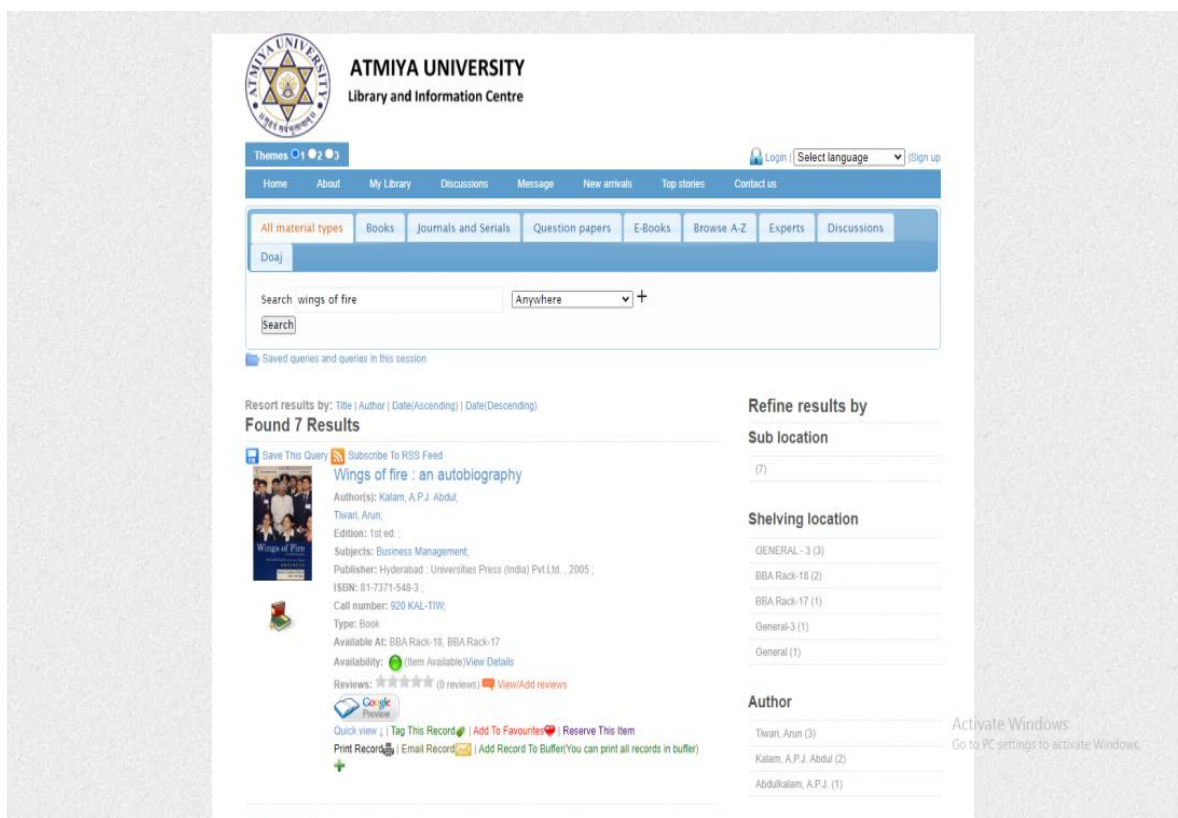


Fig 8: ILMS WebOPAC

**Registrar**  
**Atmiya University**

Atmiya University, Rajkot-Rajkot-Gujarat-India







The screenshot displays the Atmiya University Library and Information Centre (ILMS WebOPAC) interface. At the top, there is a navigation bar with links for Home, About, My Library, Discussions, Message, New arrivals, Top stories, and Contact us. Below this, a search bar contains the text 'wings of fire' and a search button. The main content area shows search results for 'Wings of Fire' by Aravind Adiga, published by Random House India in 2005. The interface also features a sidebar with various user options like 'My Check-Outs', 'My Reservations', and 'My Requests For Check Out'. On the right side, there are filters for 'Sub location' and 'Shelving location'. The bottom of the page shows a footer with the URL and a 'View/Add reviews' link.

Fig 9: ILMS WebOPAC features

**Registrar**  
**Atmiya University**

Atmiya University, Rajkot, Gujarat-India





## Reports

- Acquisitions
  - Accession register
  - Budget expenditure
  - vendor performance

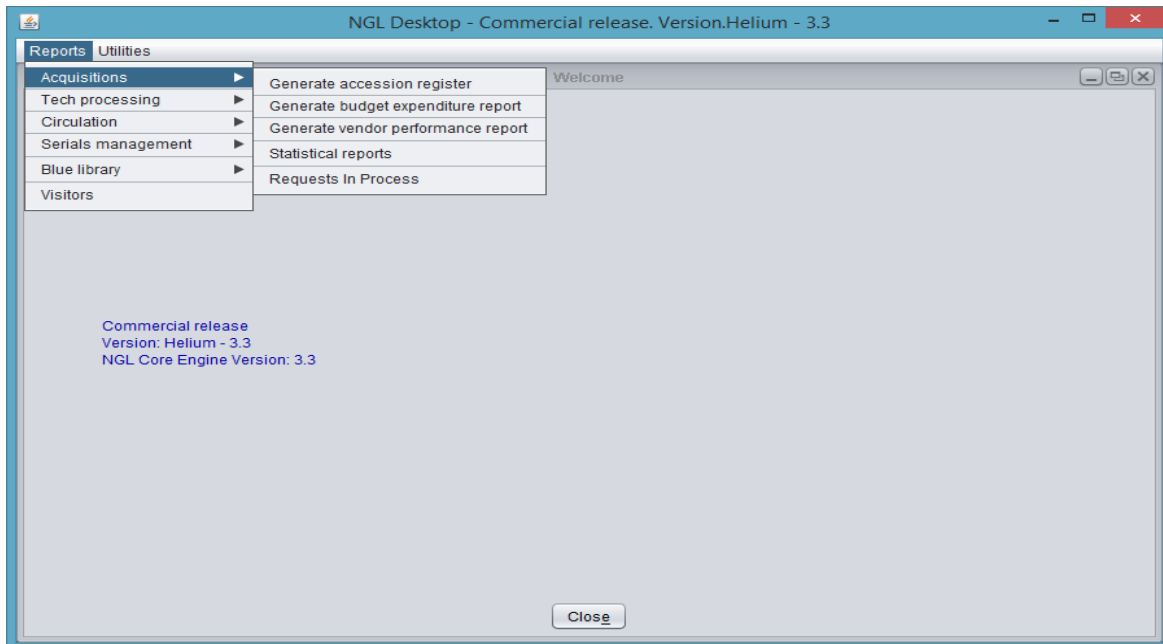
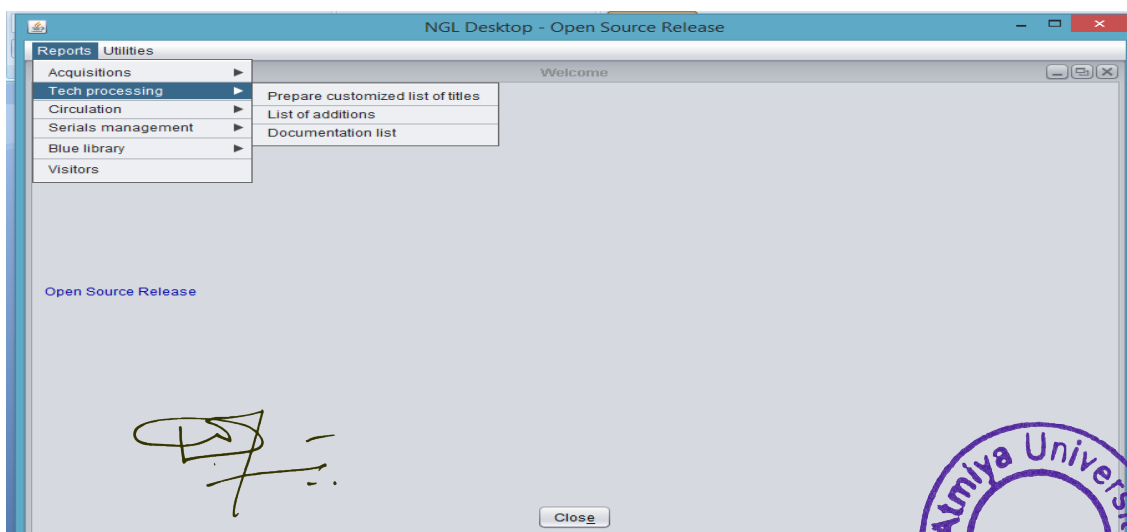


Fig 10: ILMS Reports Modules

- Technical Processing
  - Customized list of titles
  - List of new arrivals
  - Documentation list



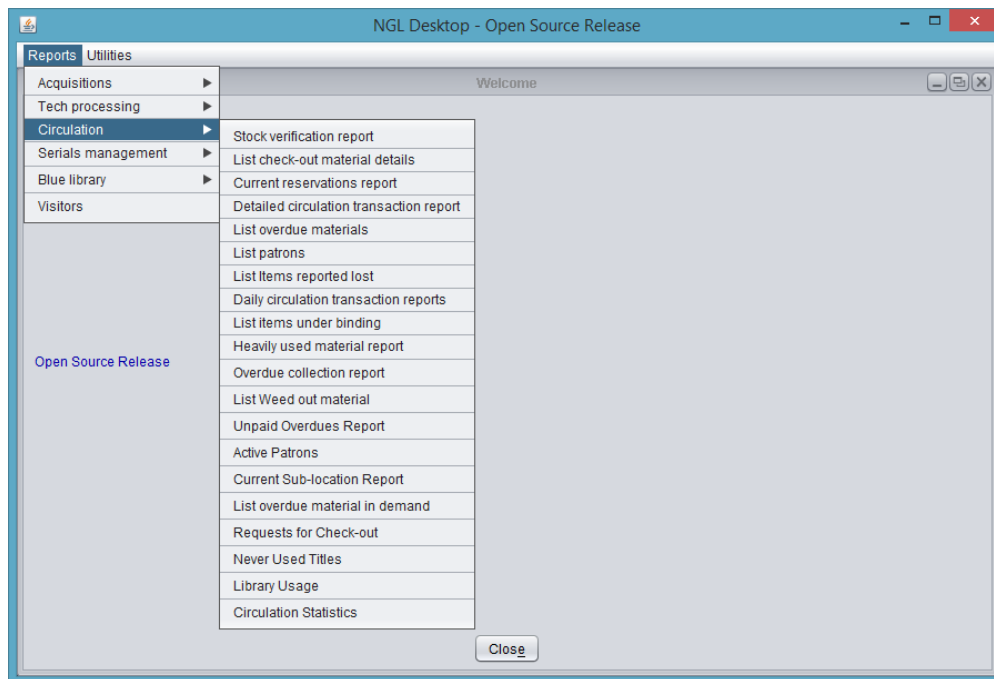
**Registrar  
Atmiya University**

Fig11: ILMS WebOPAC





- Circulation
  - Stock verification
  - Checked out material details
  - Current reservations
  - Detailed Circulation Transaction
  - Overdue material
  - Patron List (Users List)
  - Items reported lost
  - Daily Circulation Transaction
  - Items under binding



*Fig 12: ILMS Reports Circulation module*

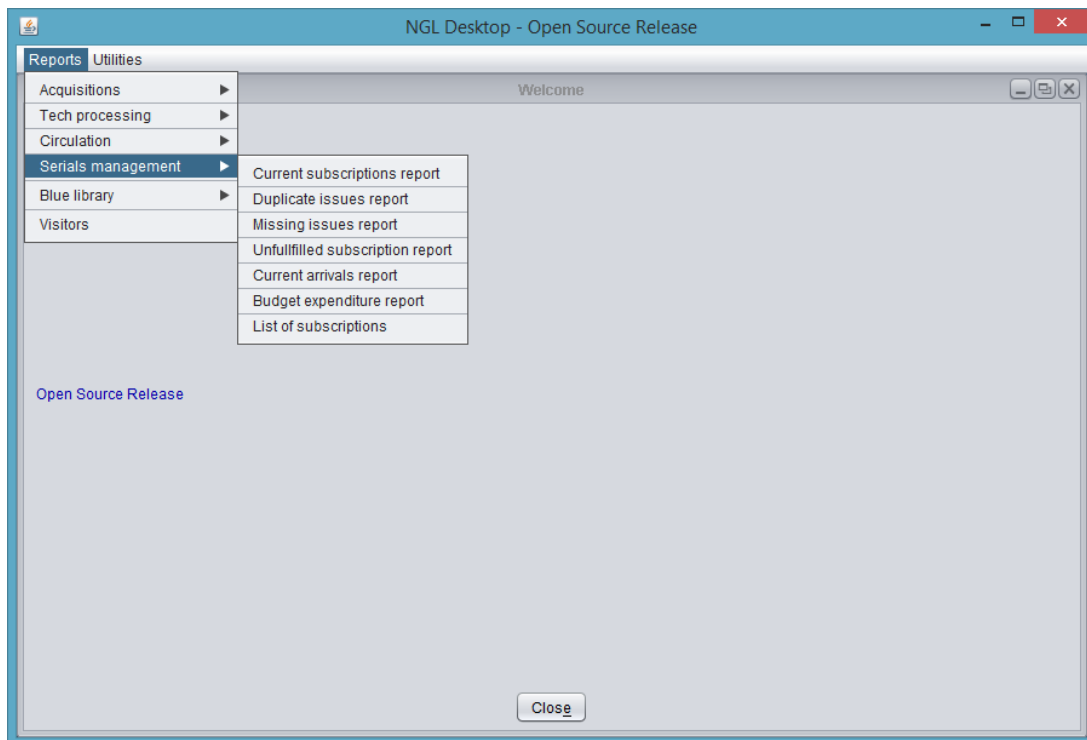
**Registrar  
Atmiya University**

Atmiya University, Rajkot-Gujarat-India





- Serials management
  - Current subscriptions
  - Duplicate issues
  - Missing issues
  - Unfulfilled subscriptions
  - Current arrivals
  - Budget expenditure
  - List of subscriptions



*Fig 13: ILMS Reports Serial Management module*

**Registrar  
Atmiya University**

Atmiya University, Rajkot-Gujarat-India

