

| | | |
|--|---|-----------------|
|  ATMIYA UNIVERSITY | NAAC – Cycle – 1 AISHE: U-0967 | |
| | Criterion 6 | GL&M |
| | KI 6.1 | M 6.1.1 |

| | |
|--------------|--|
| 6.1.1 | <i>The Institutional governance and leadership are in accordance with Vision and mission of the institution and it is visible in various institutional practices such as NEP implementation, sustained institutional growth, decentralization, participation in the institutional governance and in their Short term and Long term institutional perspective plan.</i> |
|--------------|--|

University Organograms & Quality Pyramid

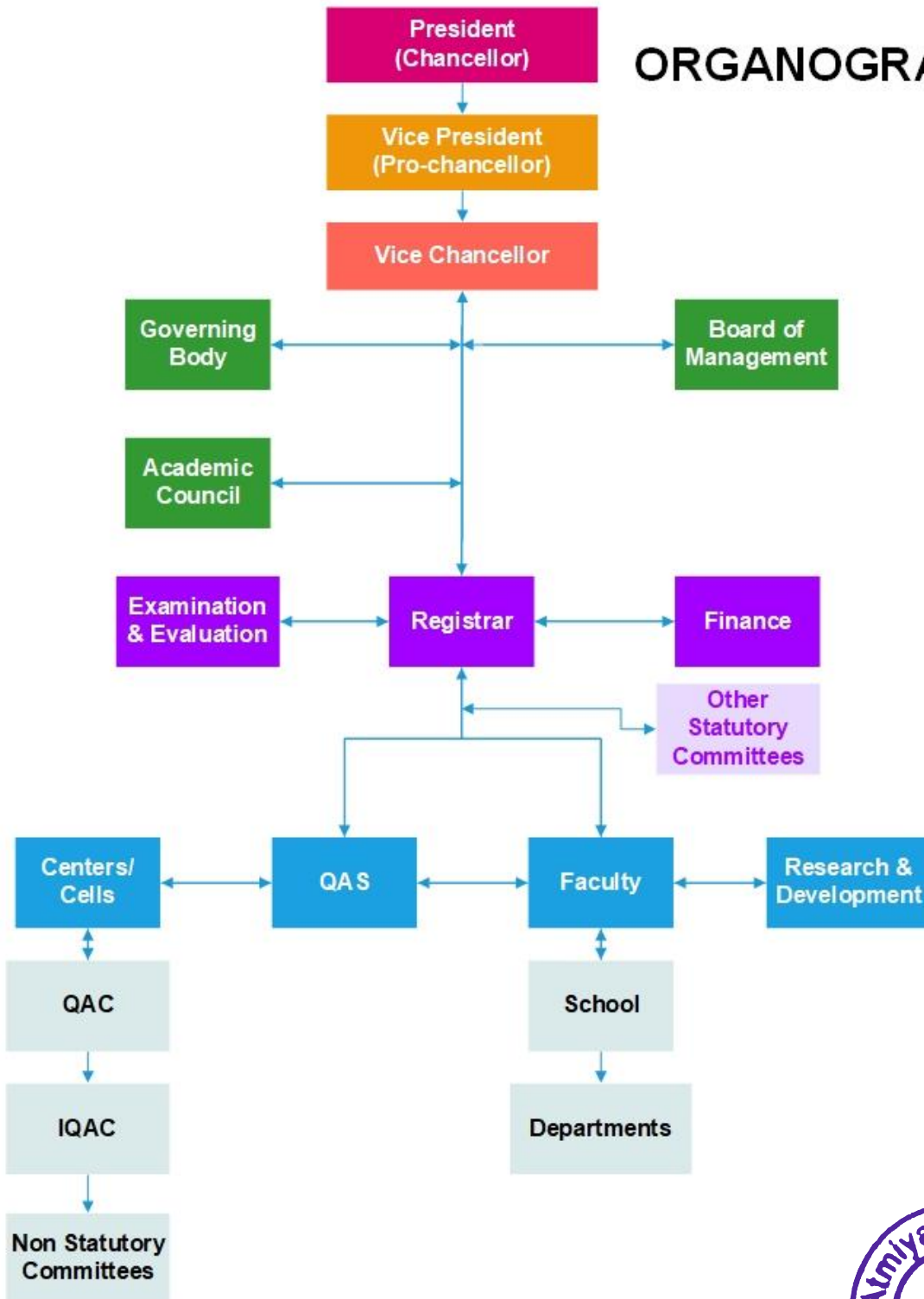

Registrar
Atmiya University
Rajkot

Atmiya University, Rajkot-Gujarat-India



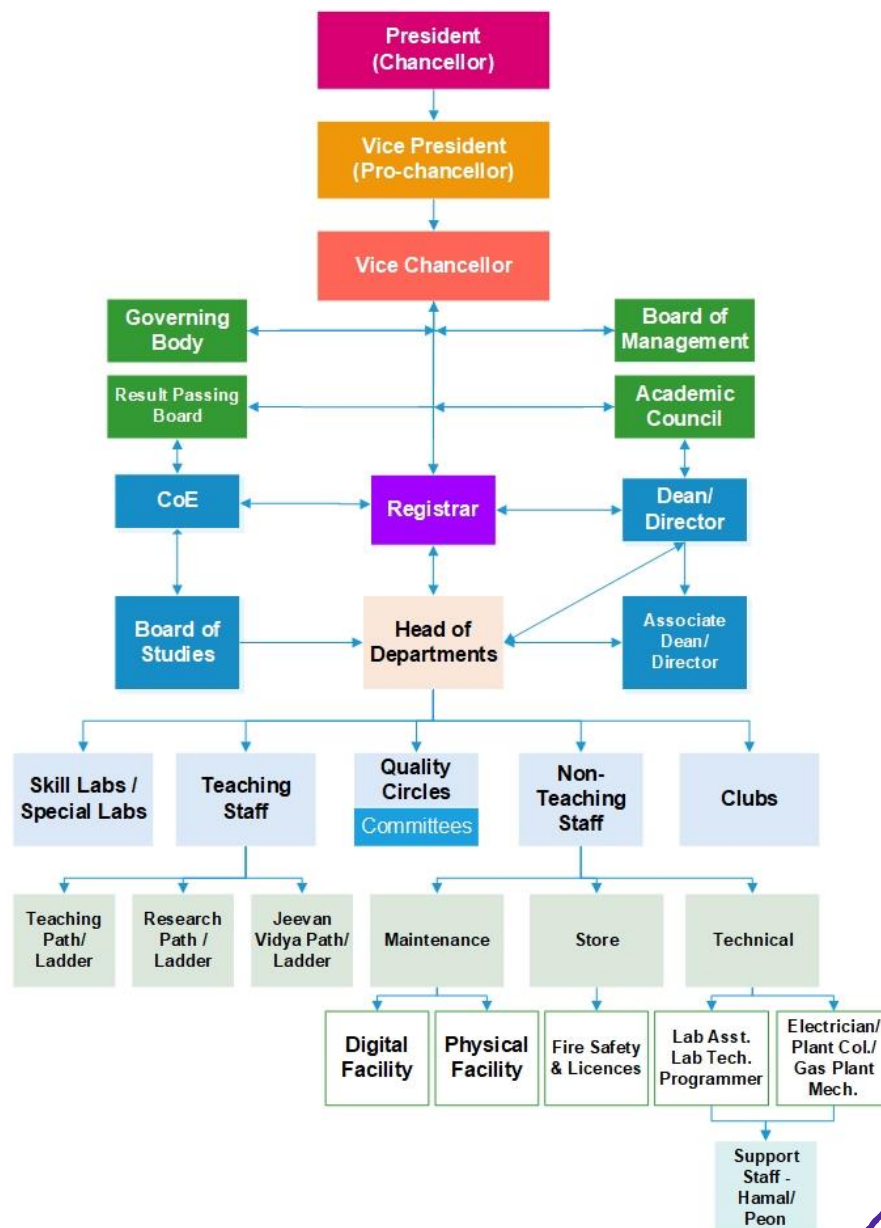


ORGANOGRAM



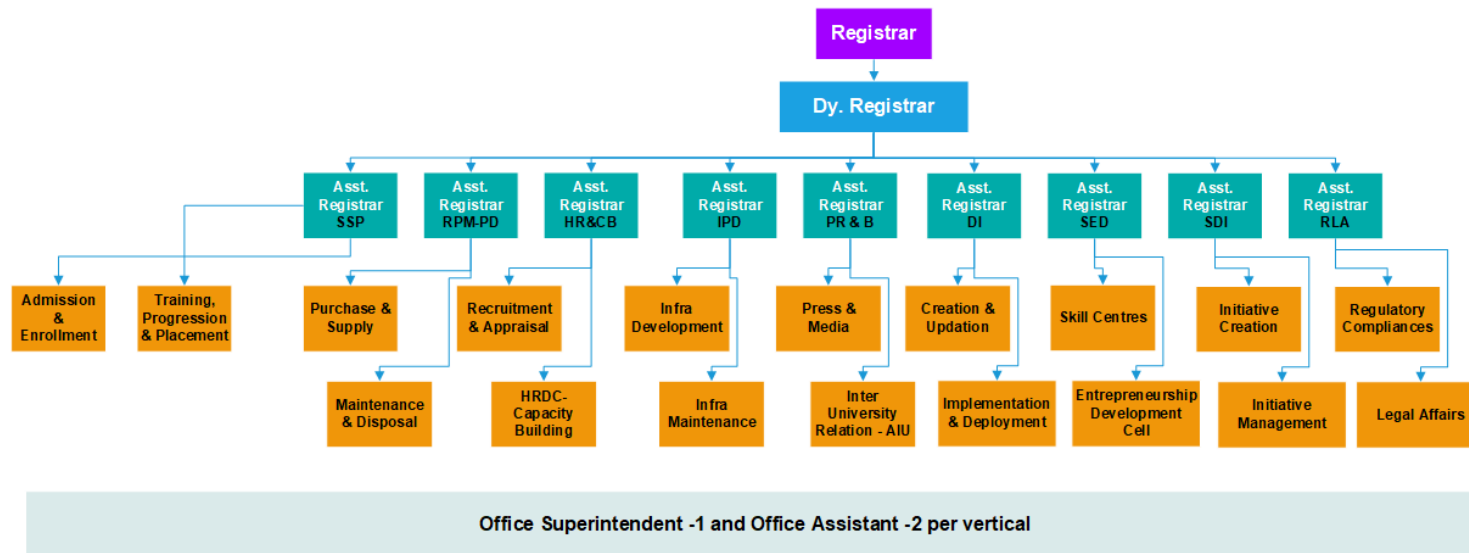


ORGANOGRAM - ACADEMIC





ORGANOGRAM Acadmic Administration



SSP : Student Support & Progression
 RPM-PD : Resource Planning & Mgt – Physical & Digital
 HR&CB : Human Resource and Capacity Building

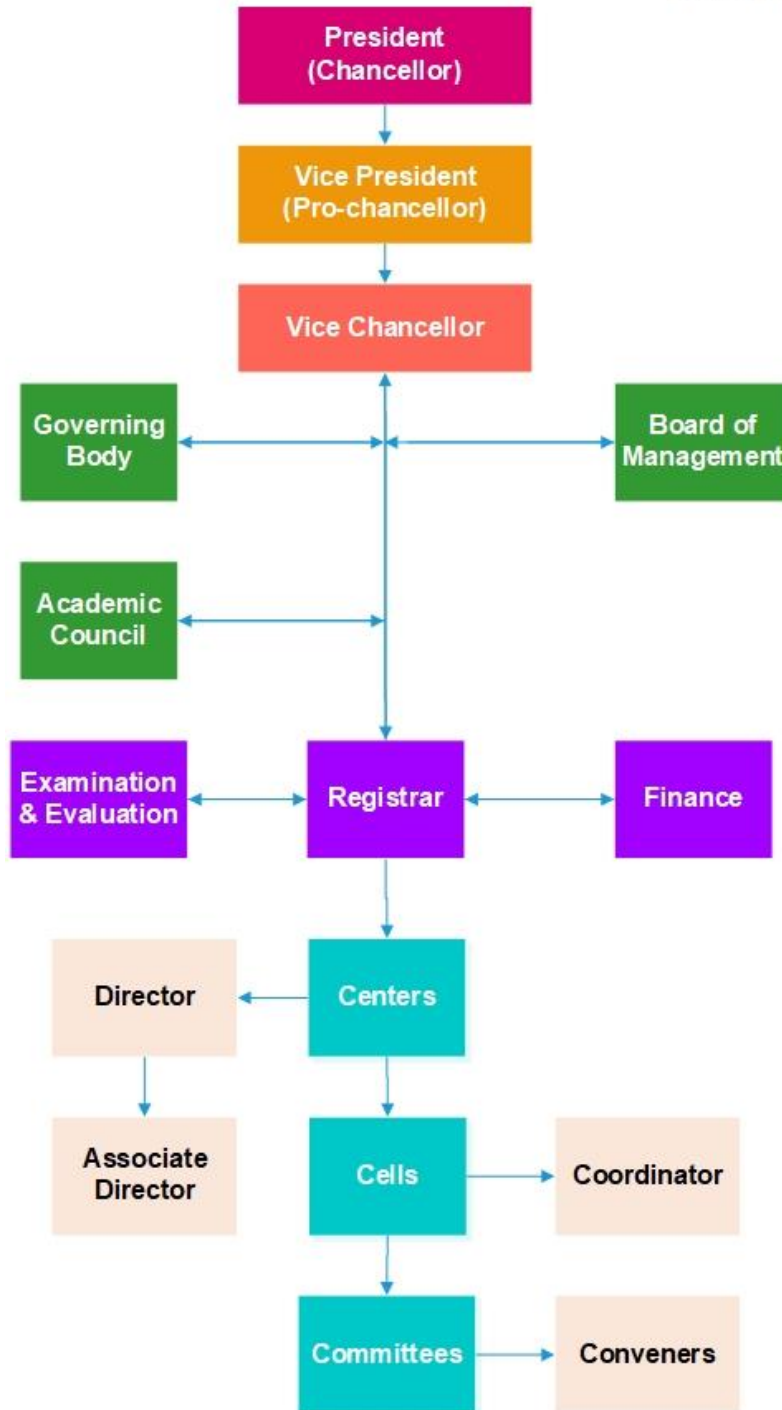
IPD : Infrastructure Planning and Development
 PR & B : Public Relation and Branding
 DI : Digital Initiatives

SED : Skilling and Entrepreneurship Development
 SDI : Sustainable Development Initiatives
 RLA : Regulatory and Legal Affairs



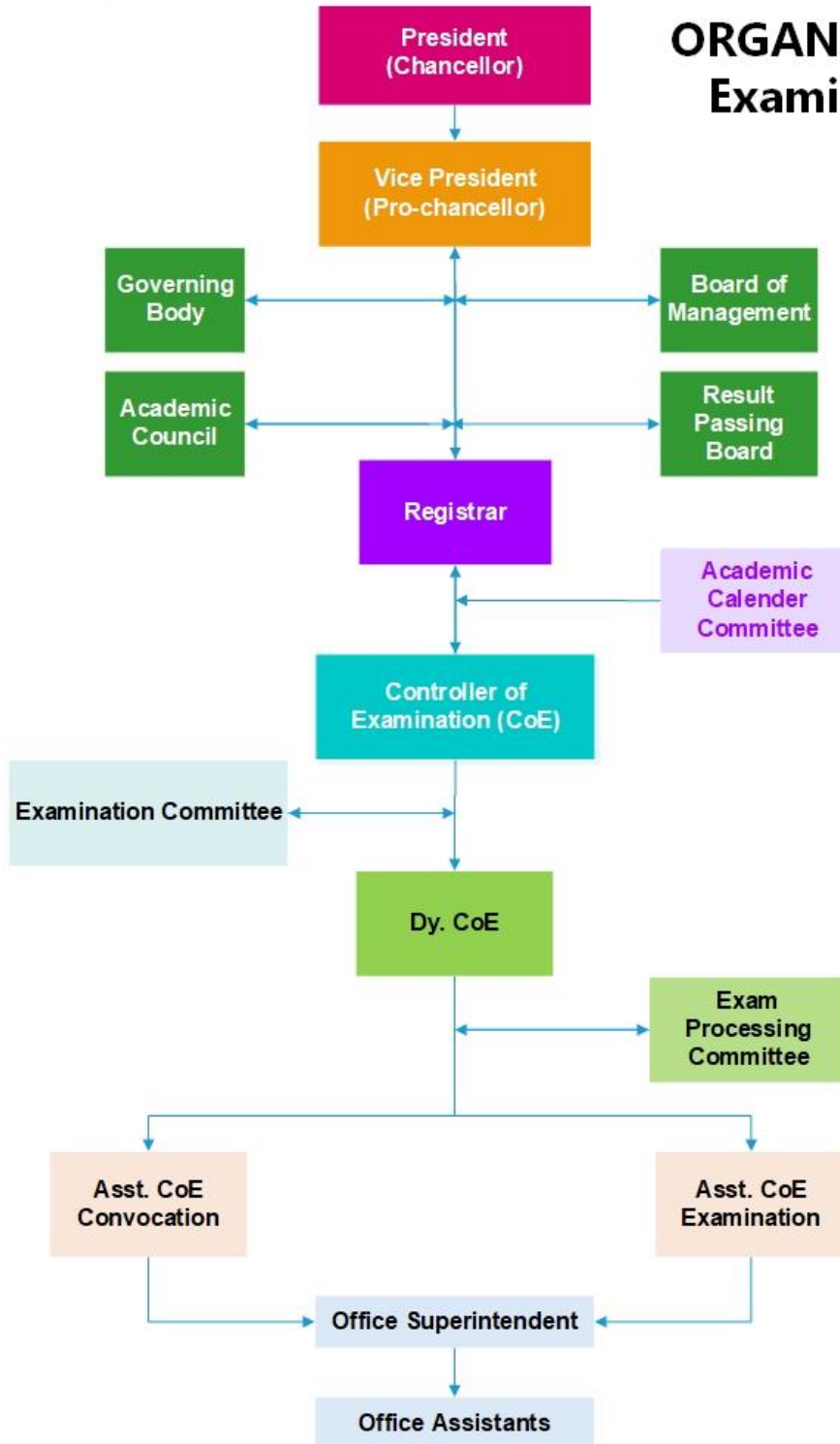


**ORGANOGRAM
University Centres**



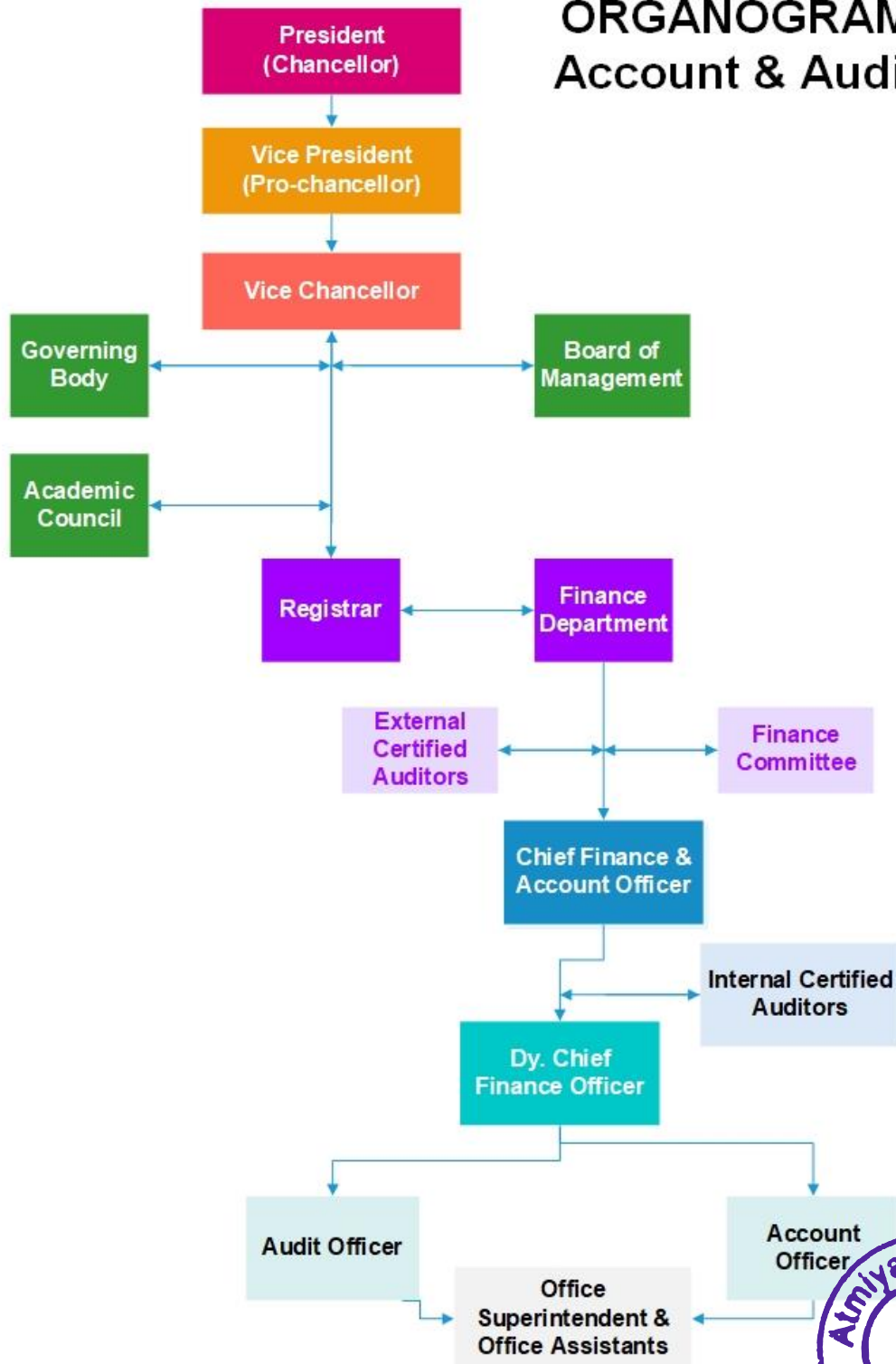


ORGANOGRAM Examination





ORGANOGRAM Account & Audit





**ATMIYA
UNIVERSITY**

**NAAC – Cycle – 1
AISHE: U-0967**

Criterion 6

GL&M

KI 6.1

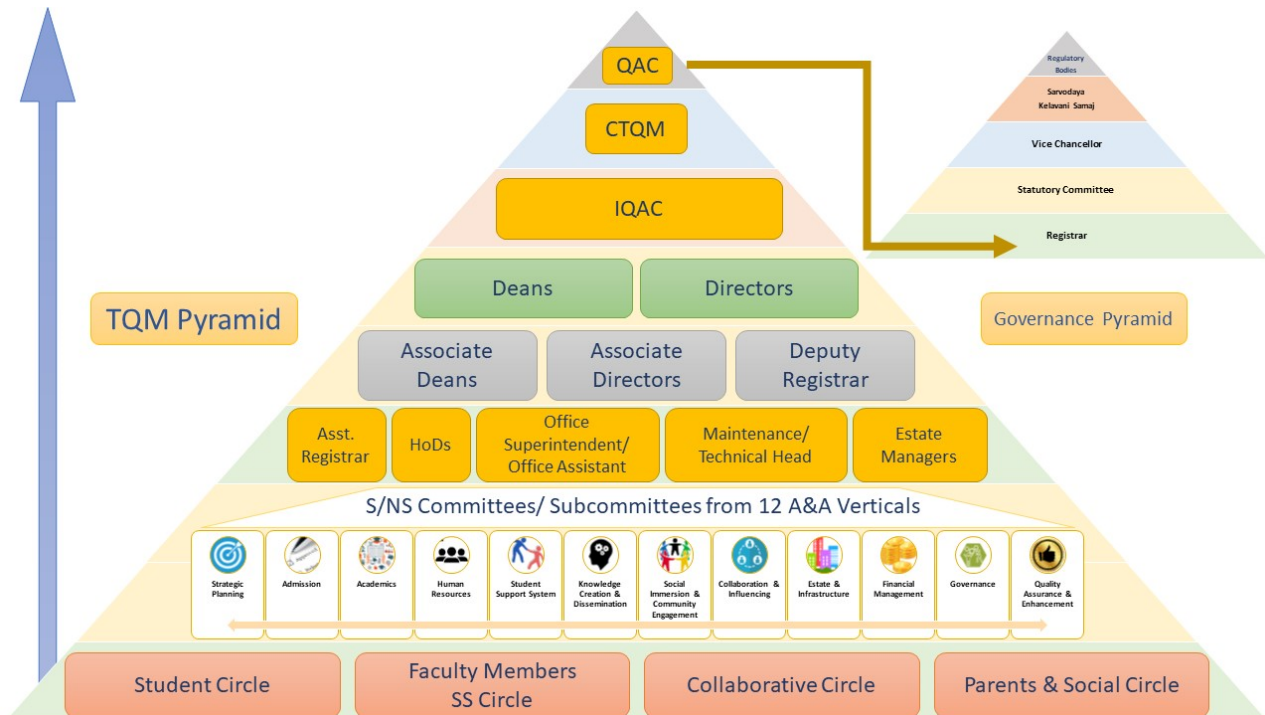
M 6.1.1



ATMIYA UNIVERSITY

(Established under the Gujarat Private University Act 11, 2018)

Yogidham Gurukul, Kalawad Road, Rajkot - 360005, Gujarat (INDIA)



Quality Pyramid

